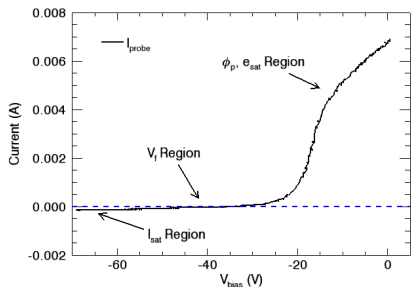
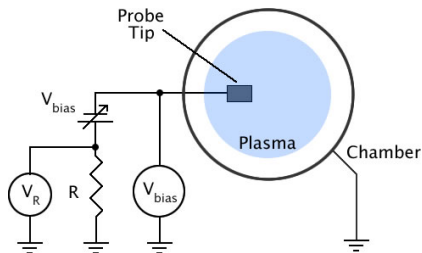


Particle flux measurement with Langmuir probes



credit:[David Pace, 2015]

- A small, conductive component in direct contact with plasma.
- The measurement output is determined: i) shape: Langmuir probe, ball-pen probe, tunnel probe, Katsumoto probe, Mach probe ... ii) by the applied voltage.
- Measurement only at the edge of the plasma.
- Measured quantities: plasma potential, electron temperature and density, electric fields, electron distribution functions ...



David Pace (2015). Example of langmuir probe analysis. <https://www.davidpace.com/example-of-langmuir-probe-analysis/>. [Online; accessed 3-January-2019].