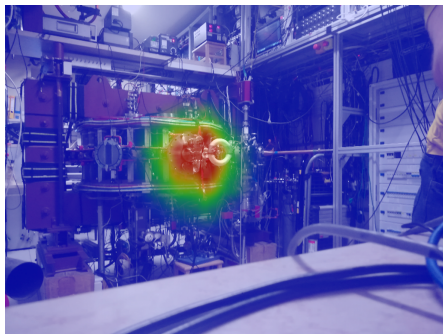
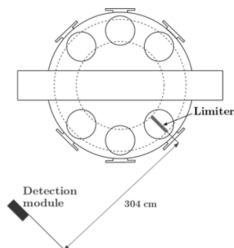


Compton camera on the GOLEM tokamak



- Compton camera has the ability to detect the direction of gamma rays produced by radioisotopes.
- The Compton camera was created from a Timepix3 detector with a sensor from Cadmium-Telluride with a thickness of 2 mm.
- Ongoing improvements of the camera resolution and location.

[S. Malec, 2023]



S. Malec (2023). Compton camera for detection of hard x-rays produced on the golem tokamak.