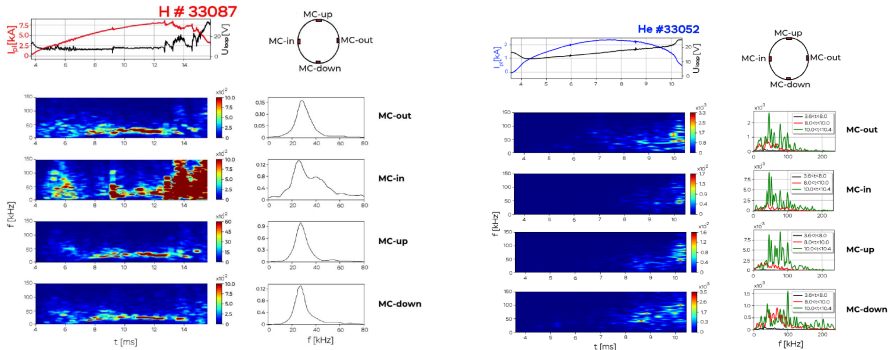


# H and He Plasmas in the GOLEM Tokamak: results



- Plasma scenarios in H and in He in the GOLEM are radically different.
- In hydrogen plasma magnetic instabilities usually occur near the maximum plasma current, that lead to the disruption.
- Helium plasma quietly extinguishes due to the exhaust of the magnetic flux in the primary winding of tokamak transformer.