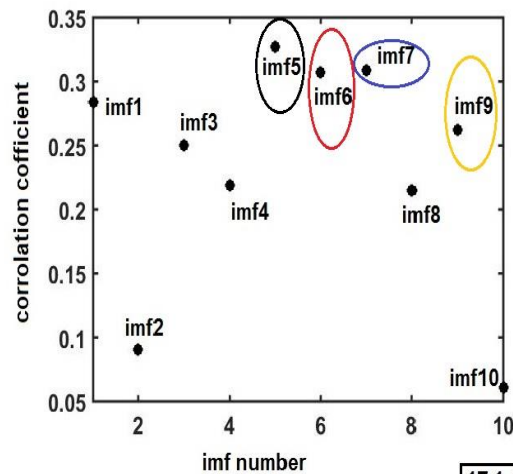
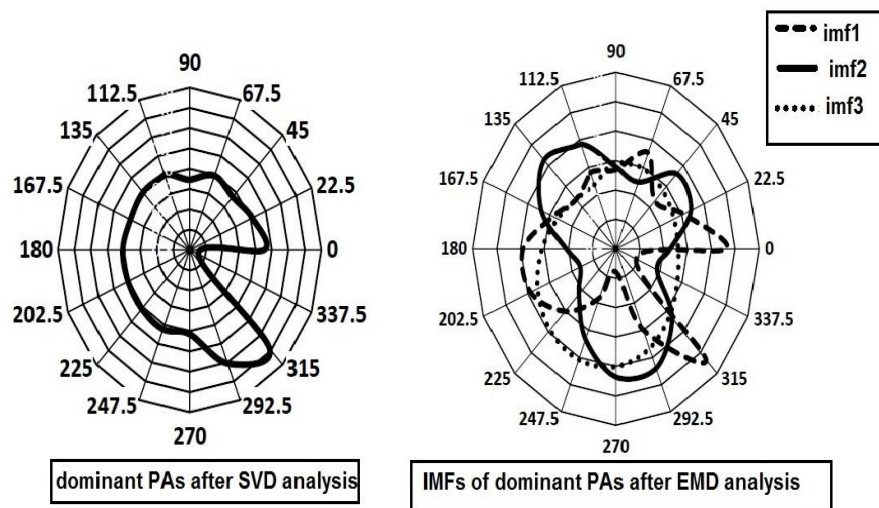
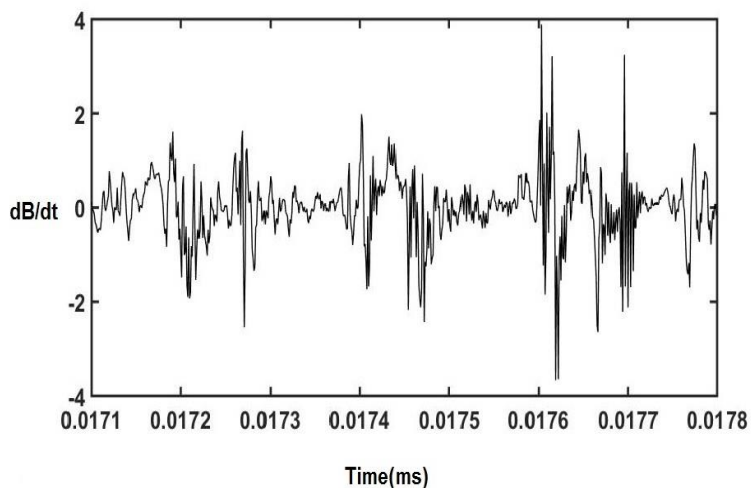
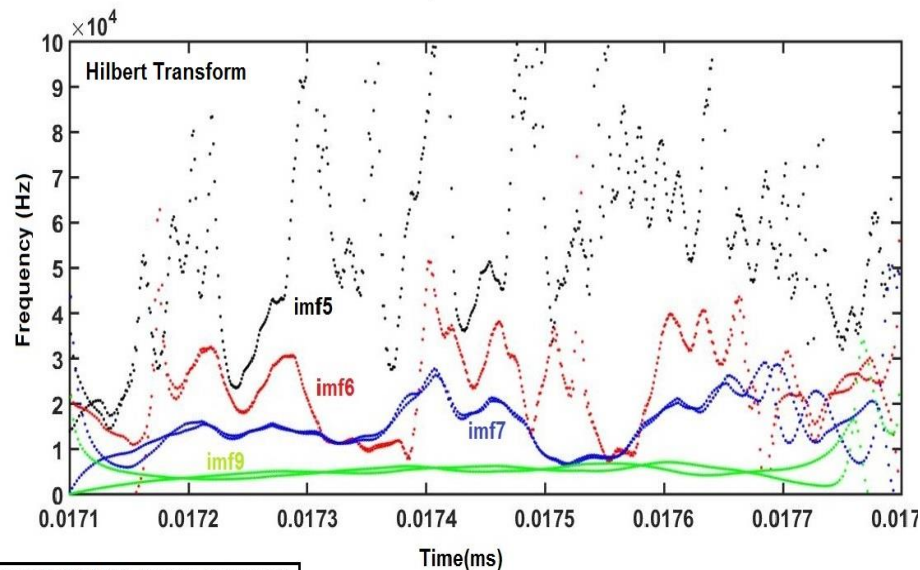


MHD study by (SVD+HHT)Analysis



17.1-17.8 ms shot 10579 Golem Tokamak



Assumption

Time window 17.1-17.8 ms in shot number 10579 from Golem Tokamak selected.

Results

- 1 : MHD mode $m=3$ is dominant mode after SVD+HHT analysis
- 2: Time-Frequency evolution of this short time shows that MHD activity have constant frequency around 10 KHz
- 3 : there are transient frequencies between 10-40 KHz In some timespan