



WORKSWELL INFRARED CAMERA

Quick Start Guide

Release date: 17th of June, 2016

End users Validity date: till next revision

Revision Number: 1.2

Package Content

Confirm that the package contains the items listed below.

- Workswell Infrared Camera
- USB3 Cable (USB3 version)
- Ethernet Cable (2x) (GigE Version)
- PoE Adapter (GigE Version)
- Back cover protection (optional)
- Calibration certificate
- Download Card
- Quick Start Guide
- Hard transport case

User Manual

User Manual is available in electronic form on the website:

<http://www.workswell.eu/documents/>

Focusing the camera

Short distance



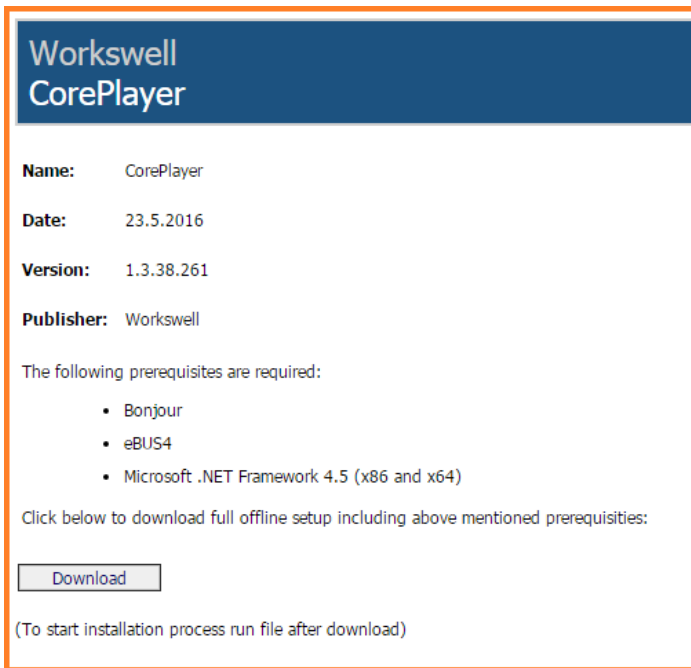
Long distance



How to start?

USB3 version

1) Download and install software CorePlayer (link on Download Card).



Workswell
CorePlayer

Name: CorePlayer
Date: 23.5.2016
Version: 1.3.38.261
Publisher: Workswell

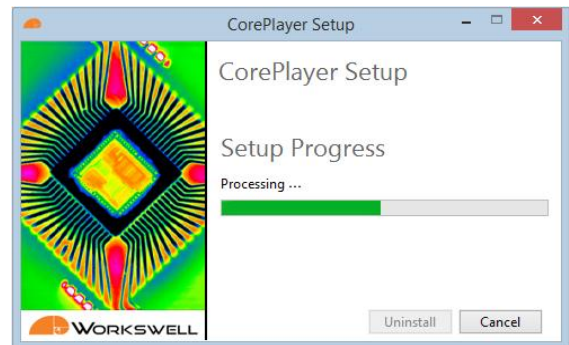
The following prerequisites are required:

- Bonjour
- eBUS4
- Microsoft .NET Framework 4.5 (x86 and x64)

Click below to download full offline setup including above mentioned prerequisites:

[Download](#)

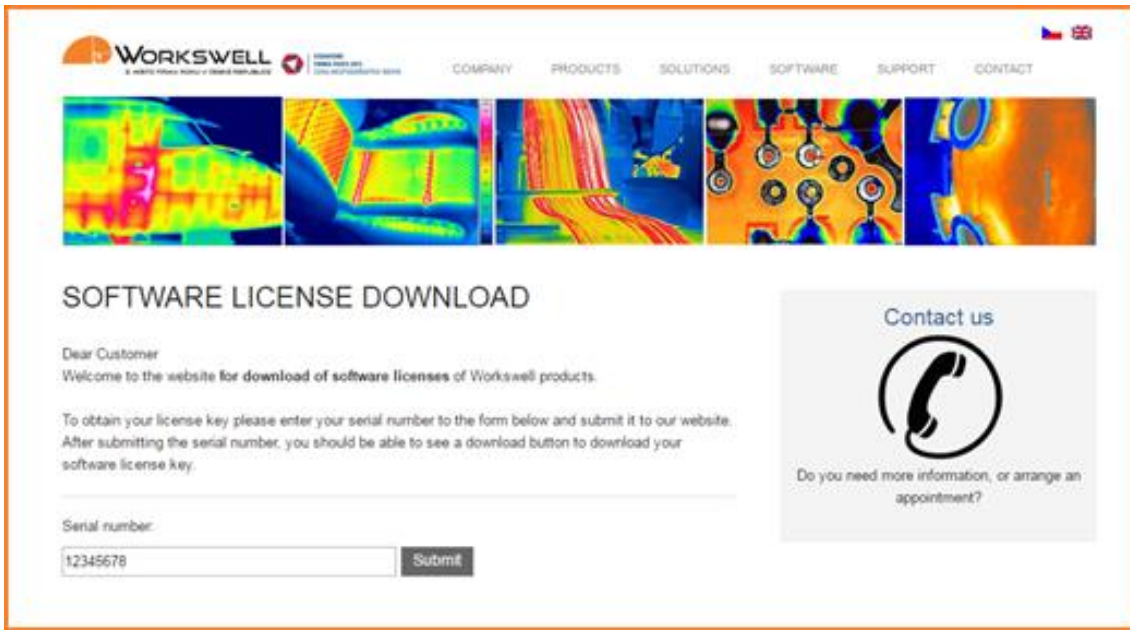
(To start installation process run file after download)



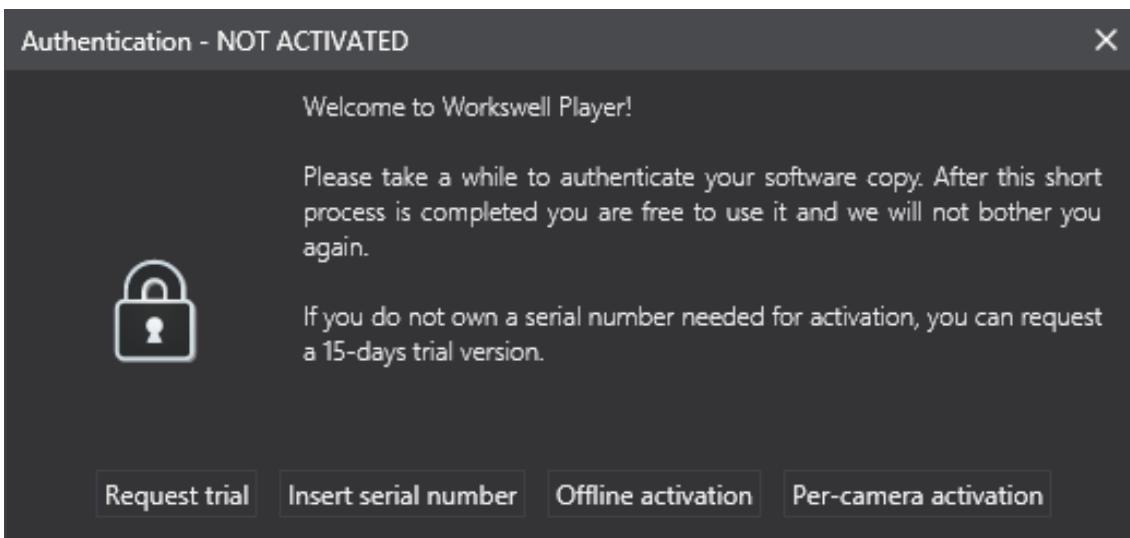
2) Connect USB3 cable to camera screw fastening screws and connect cable to USB3 port on PC.



- 3) Download license file from our website (link on Download Card), for download license, insert serial number of camera, which you can find on Calibration certification.



- 4) Connect camera to CorePlayer, select Per-camera activation and insert license.



GigE version

1) Download and install software CorePlayer (link on Download Card).

Workswell
CorePlayer

Name: CorePlayer
Date: 23.5.2016
Version: 1.3.38.261
Publisher: Workswell

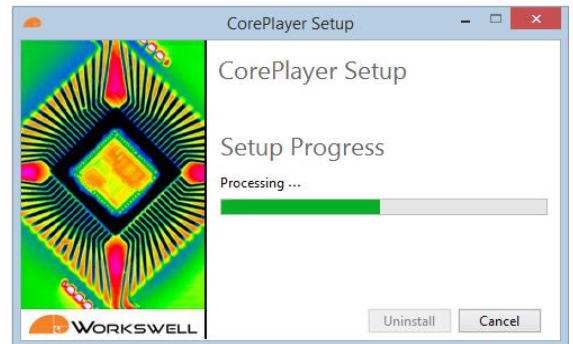
The following prerequisites are required:

- Bonjour
- eBUS4
- Microsoft .NET Framework 4.5 (x86 and x64)

Click below to download full offline setup including above mentioned prerequisites:

[Download](#)

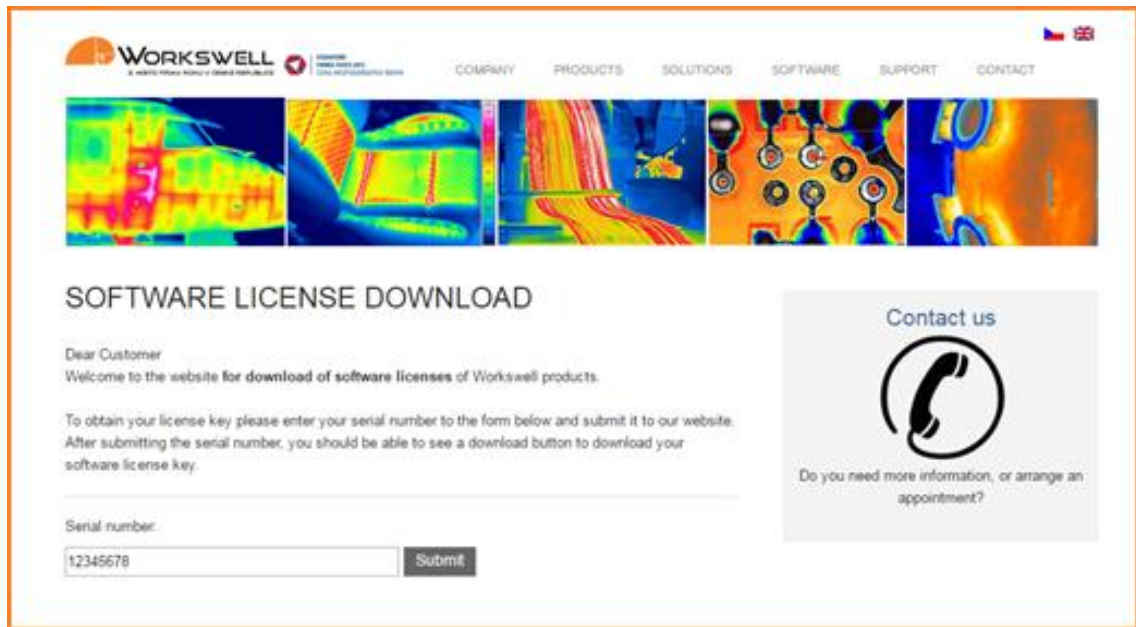
(To start installation process run file after download)



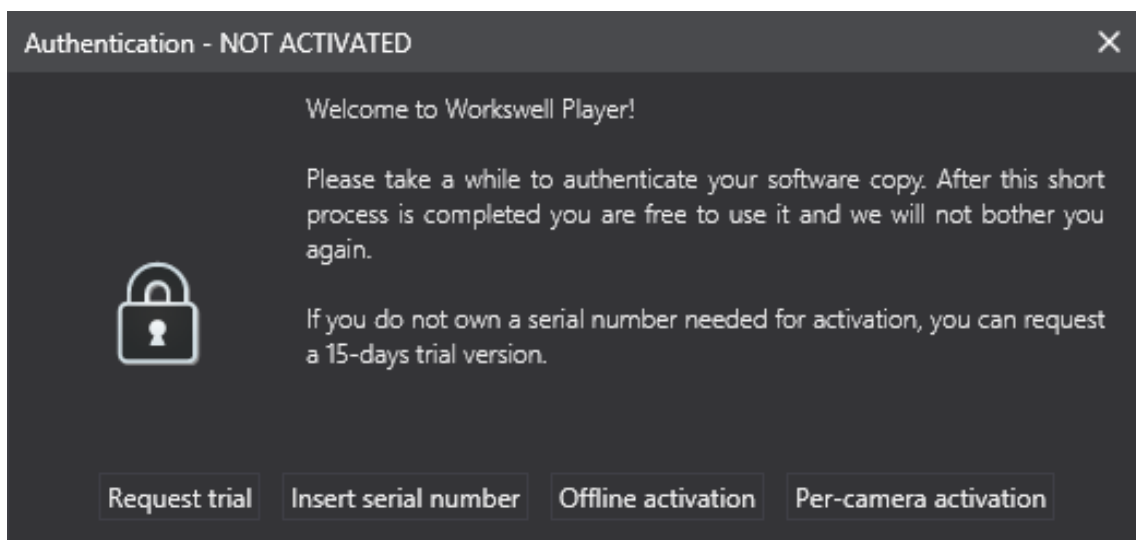
2) Connect first Ethernet cable to camera and PoE adapter to port POWER+DATA OUT. Second Ethernet cable connect to PC and PoE adapter to port LAN IN.



- 3) Download license file from our website (link on Download Card), for download license, insert serial number of camera, which you can find on Calibration certification.



- 4) Connect camera to CorePlayer, select Per-camera activation and insert license.



Back cover protection installation



1) The bigger cable gland is used for the USB3 device. Cable has to be pushed through from inside to outside, because its connector to PC is smaller. Then put the cable into cut hole.

The smaller cable gland is used for GigE devices. Cable has to be pushed through and then crimped.

2) Connect cable to camera, insert back cover to back side of camera and screw bolts (longest bolt is down).





Contacts

Sales Department

Adam Švestka, MSc., MBA

Mobile: +420 725 955 464

E-mail: adam.svestka@workswell.cz

Company contact details

Mobile: +420 725 877 063

E-mail: info@workswell.eu

Web: www.workswell.eu

Headquarters

Libocka 653/51b

160 00, Prague 6

Czech Republic

Branches

Mezirická 100

756 61, Roznov p. R.

Czech Republic

Univerzitní 1

010 08, Zilina

Slovak Republic

