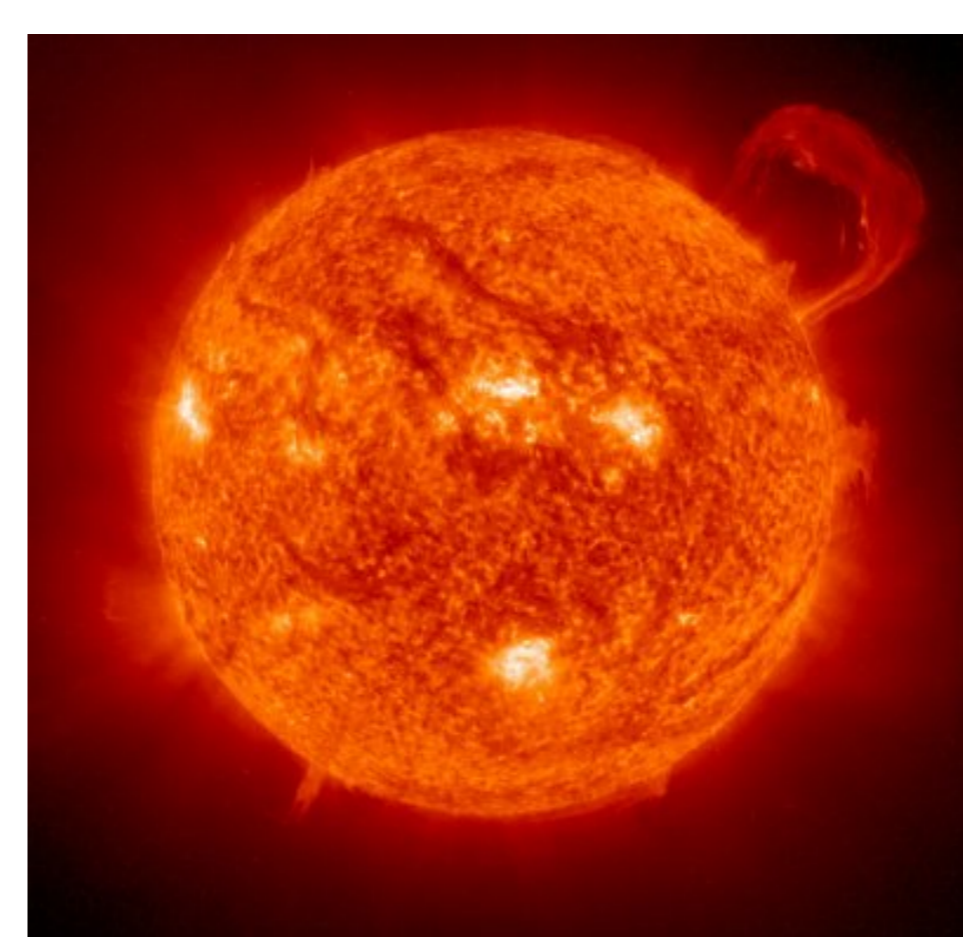
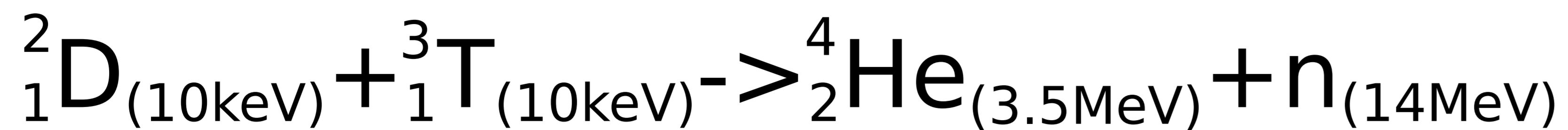


# GOLEM Tokamak

<http://golem.fjfi.cvut.cz>

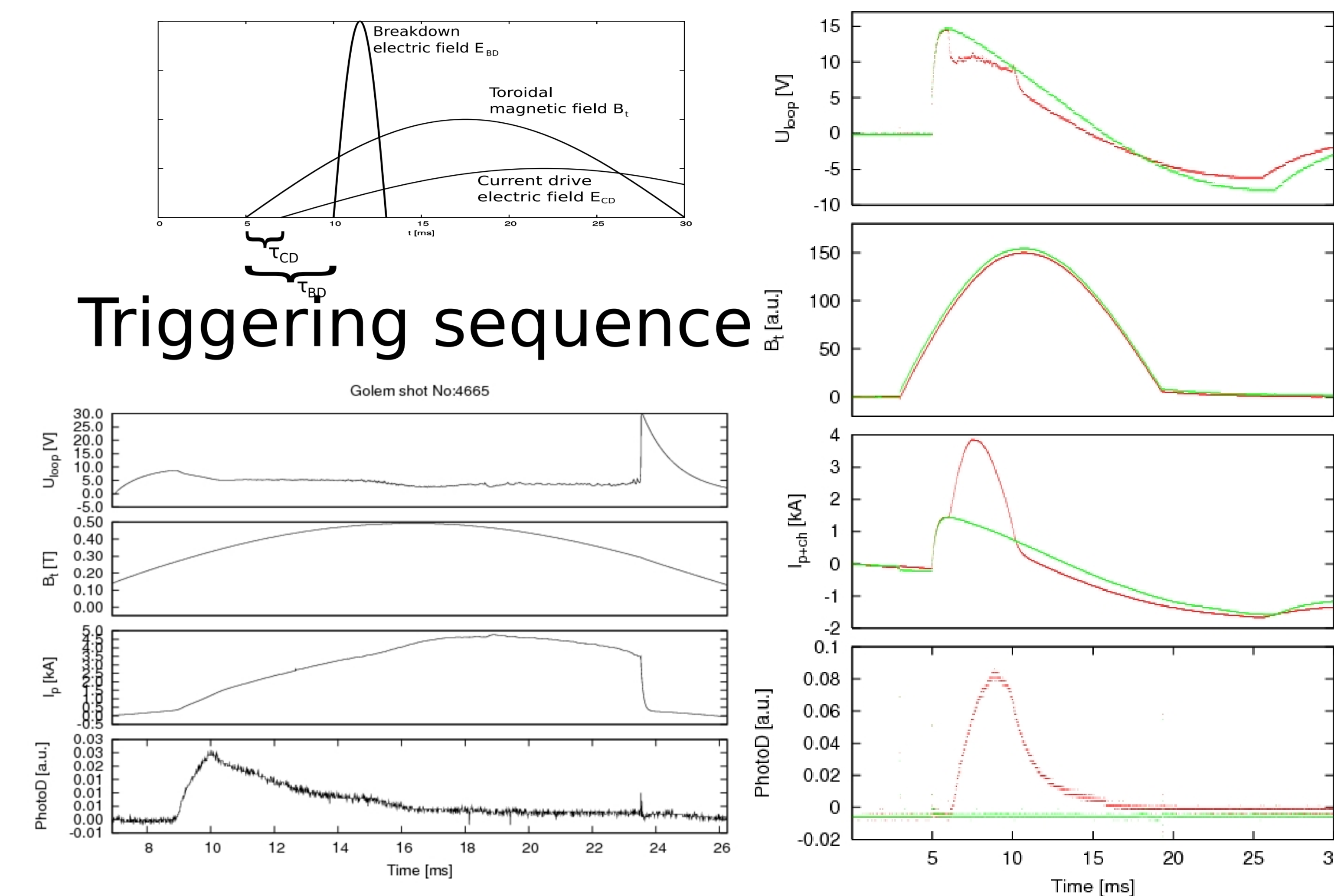
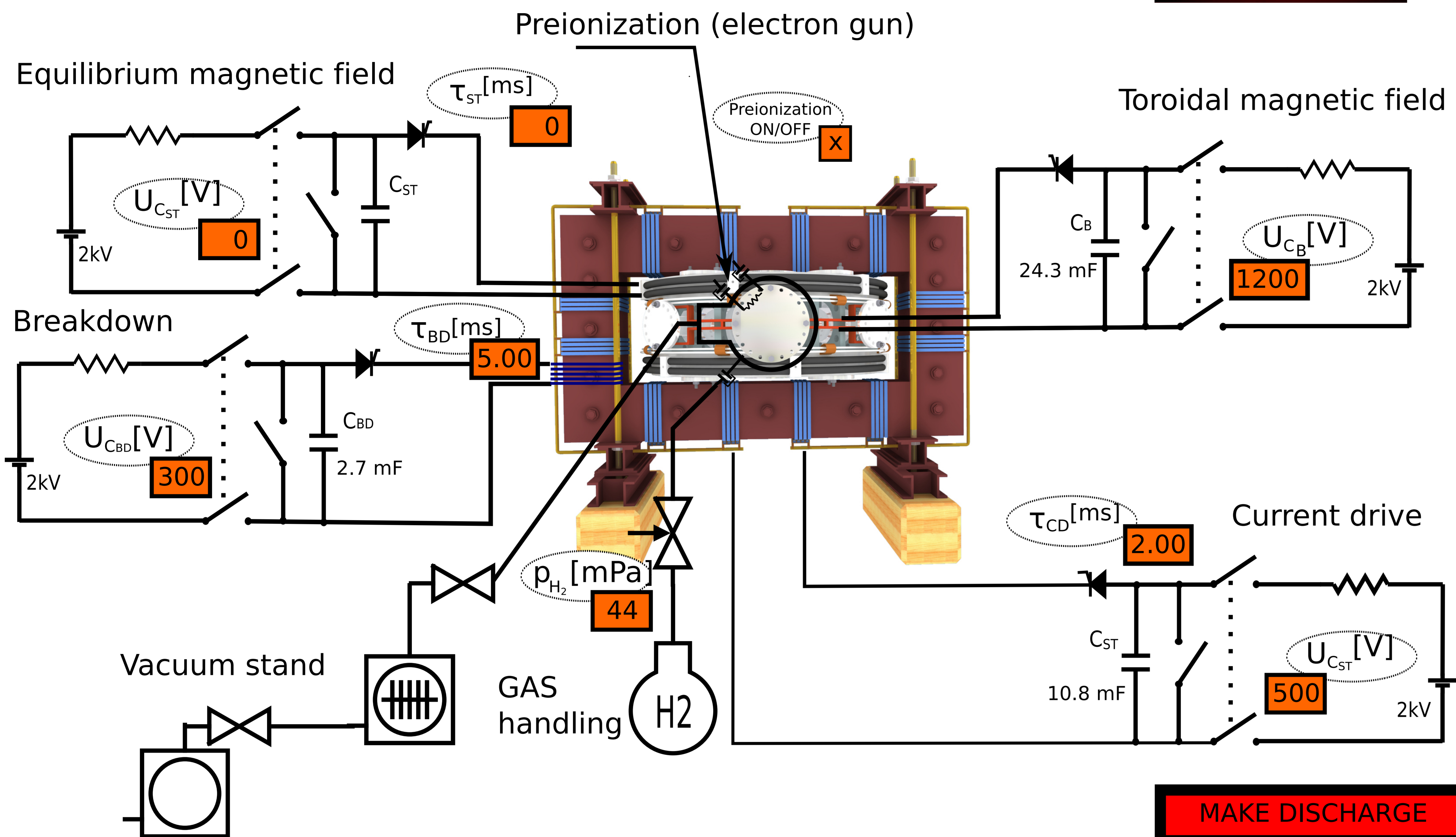


## Main parameters

- Major radius  $R = 0.4$  m.
- Minor radius  $a = 0.085$  m.
- Toroidal magnetic field  $B_t < 1.5$  T.
- Plasma current  $I < 25$  kA.
- Discharge duration  $t < 50$  ms.
- Plasma density  $n_e = 0.2 - 3.0 \cdot 10^{19}/\text{m}^3$ .
- Electron temperature  $T_e(0) < 200$  eV.
- Ion temperature  $T_i(0) < 100$  eV.

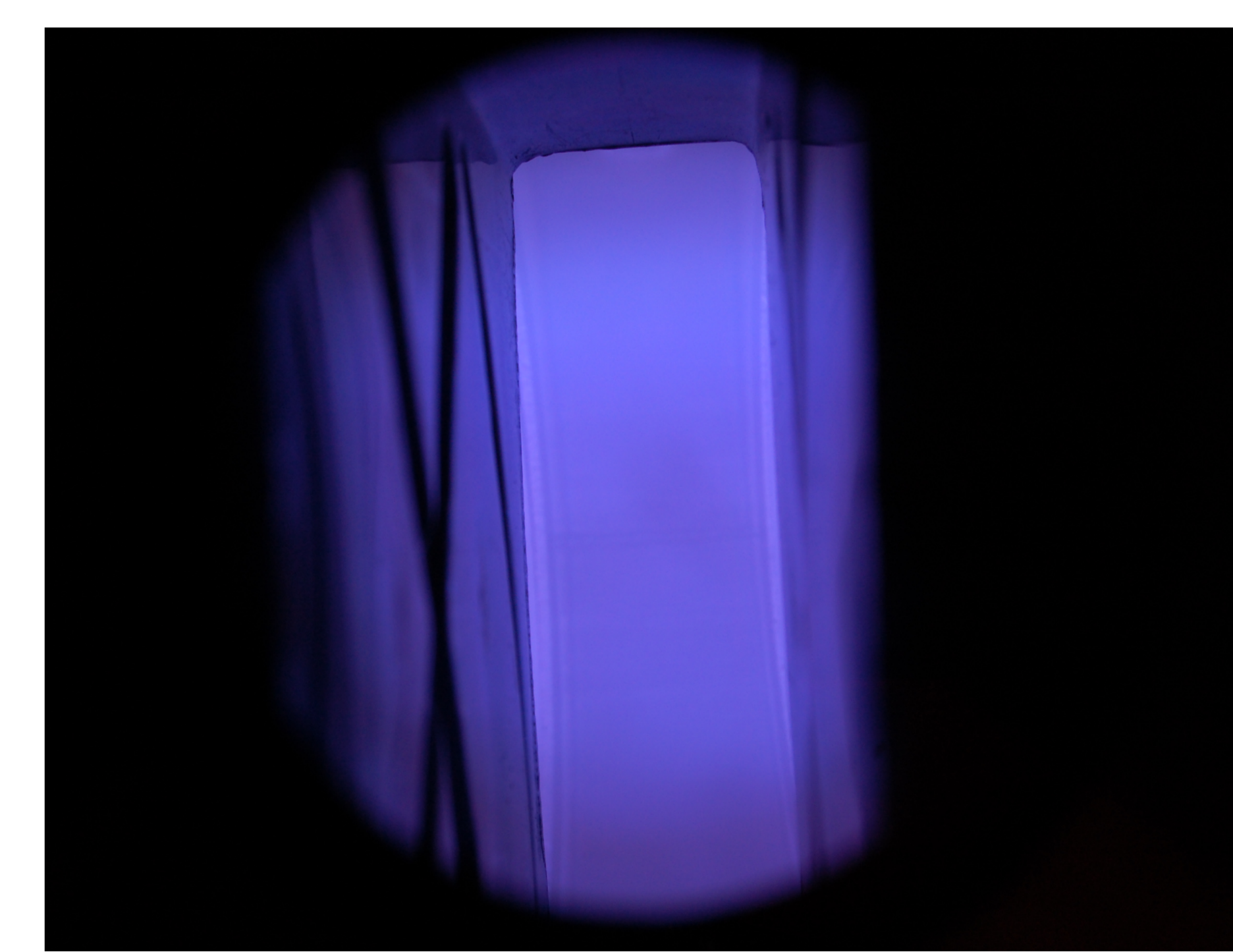
## Operation eras

- TM-1 MH**, Russian Research Centre, Kurchatov institut, Moscow, 1960-1974.
- CASTOR**, Institute of Plasma Physics, Czech Academy of Sciences, Prague, 1977-2007.
- GOLEM**, Czech Technical University, Prague, 2009-

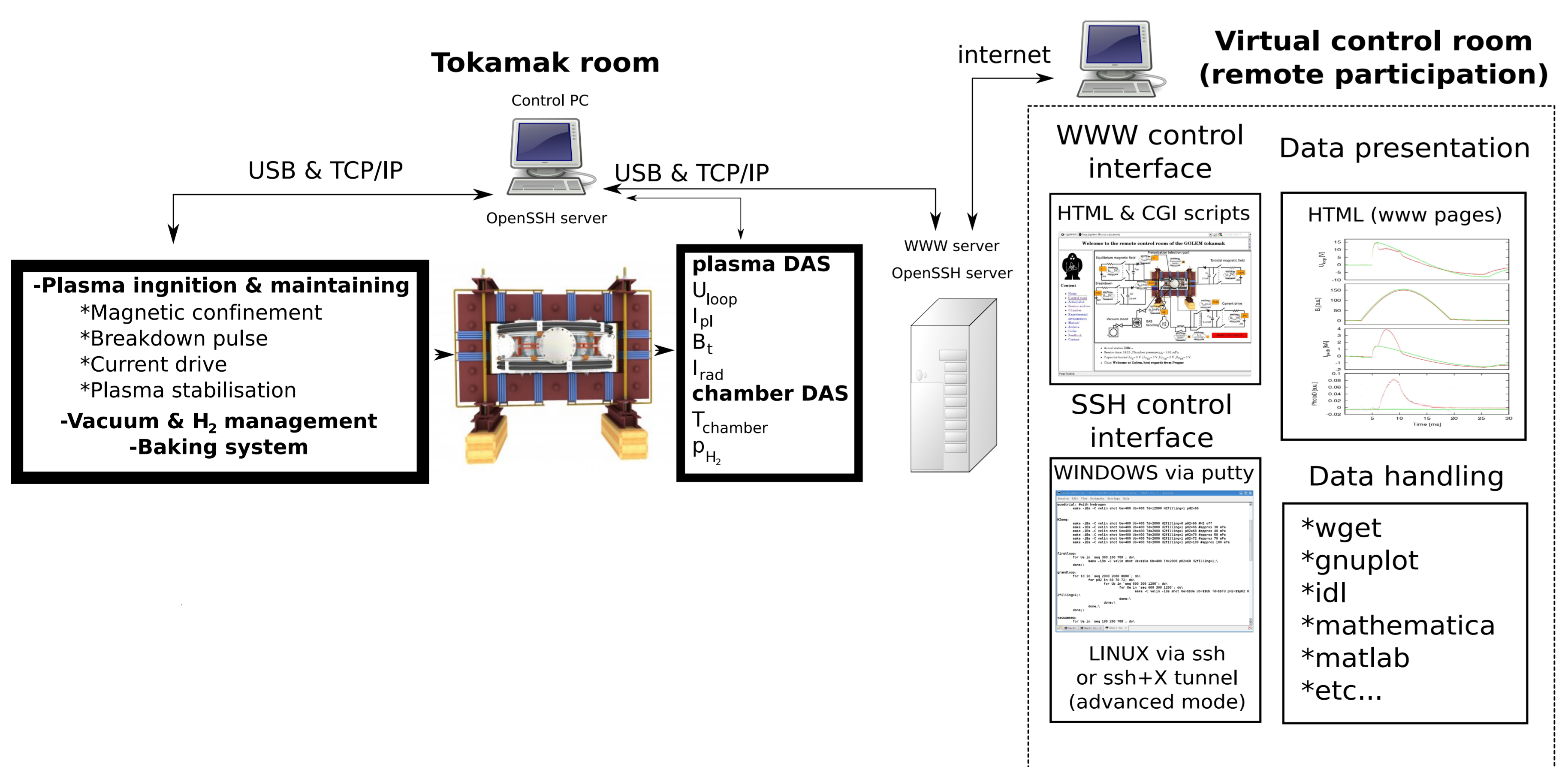


Basic discharge characteristics

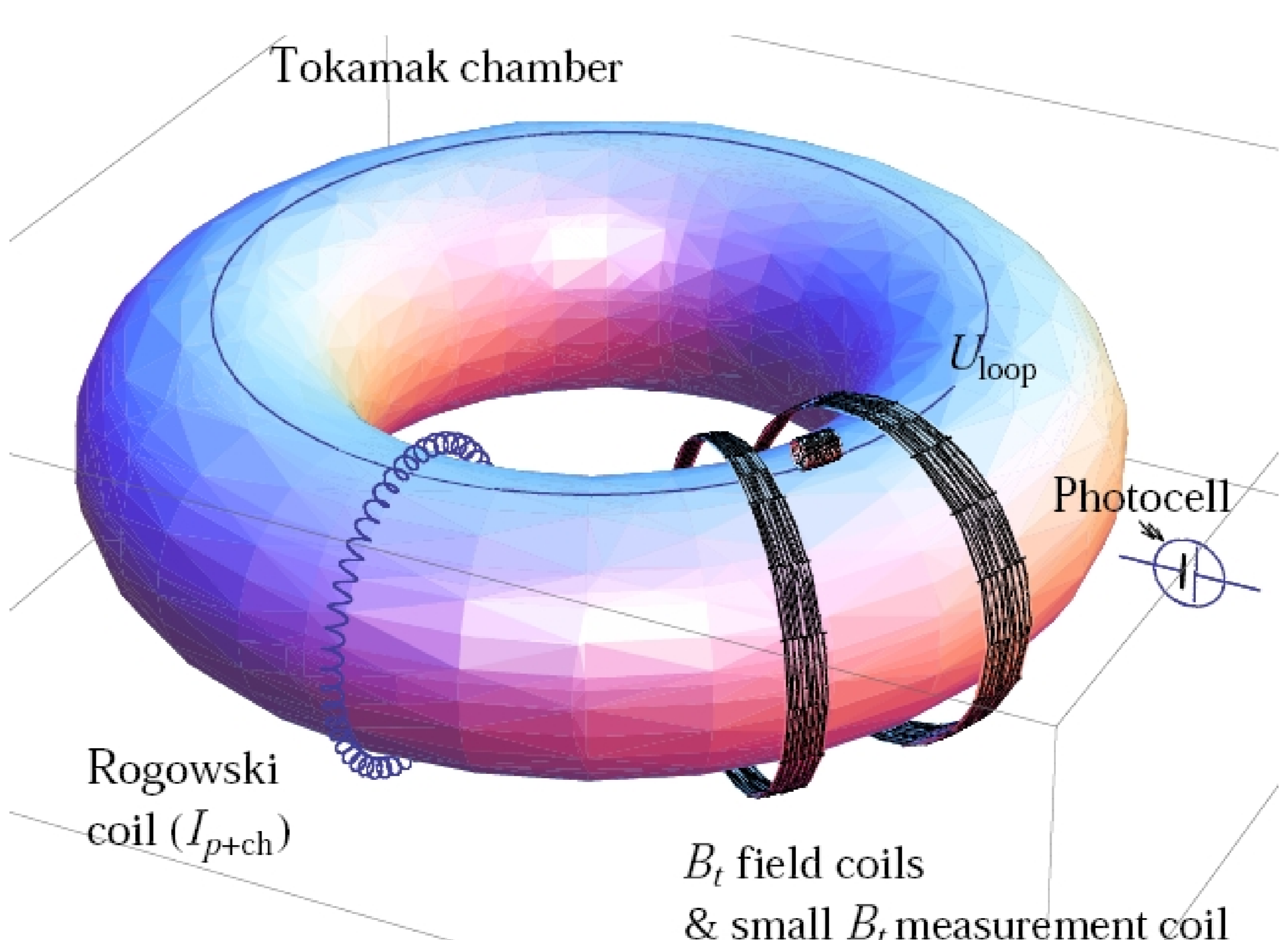
**MAKE DISCHARGE**



Discharge photo



Remote handling operation



Diagnostic system