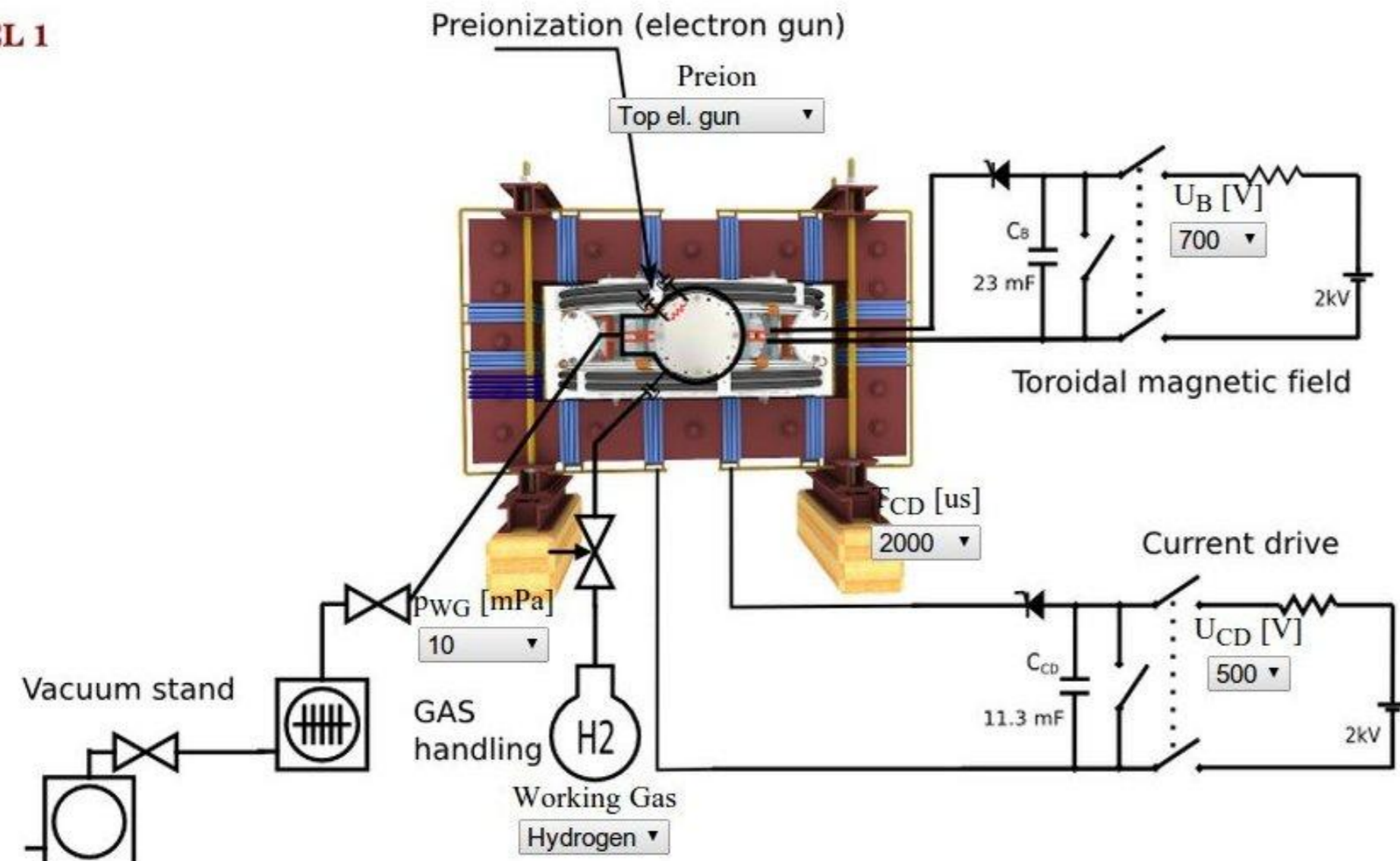
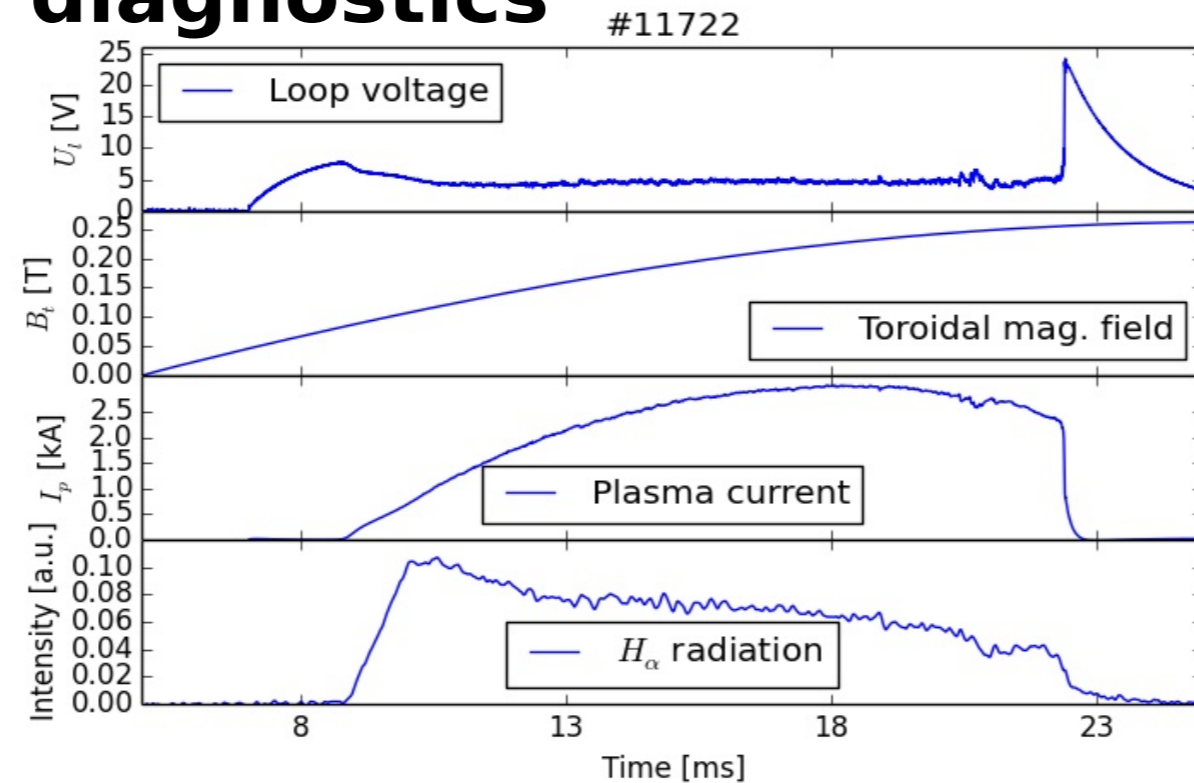
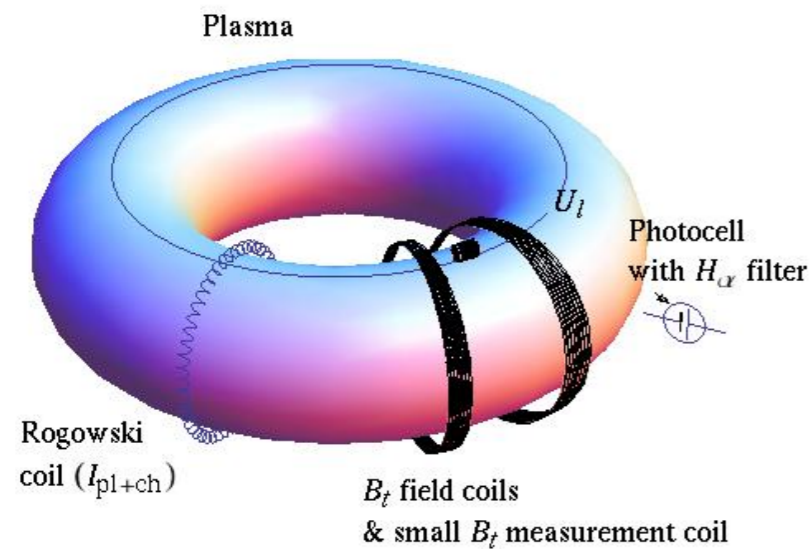


Tokamak technology setup

LEVEL 1



Basic plasma diagnostics



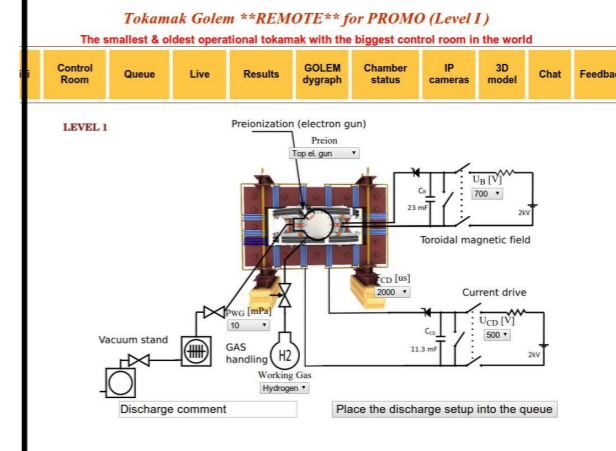
internet

Virtual control room (remote participation)

USER authorization

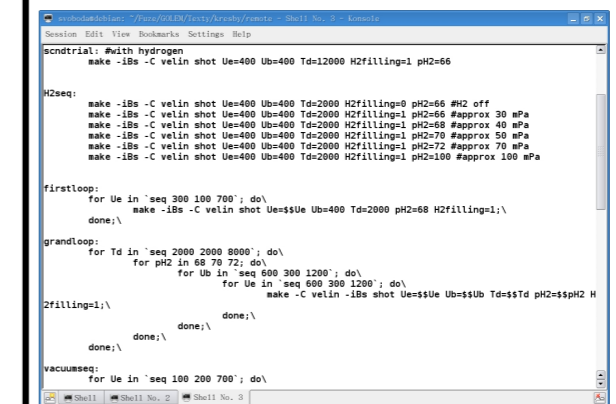
WWW control interface

HTML & PHP scripts



SSH control interface

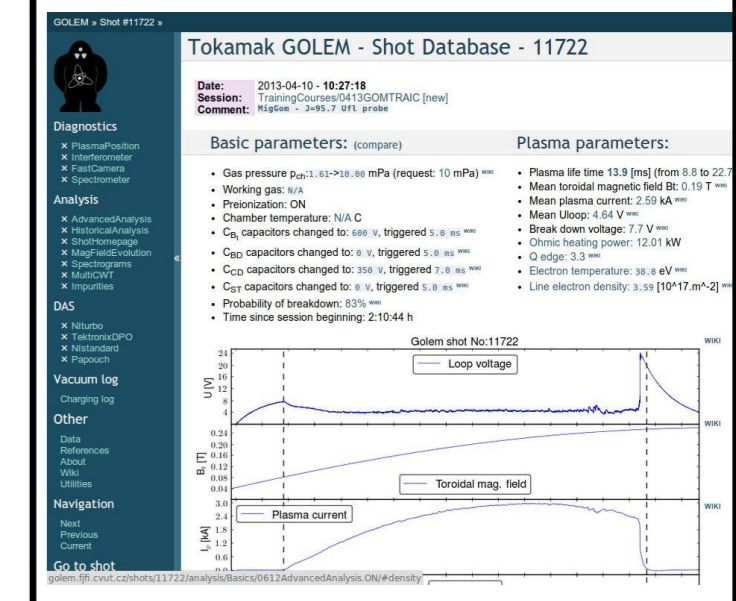
WINDOWS via putty



LINUX via ssh or ssh+X tunnel (advanced mode)

Data presentation

HTML (www pages)



Data handling

- *wget
- *gnuplot
- *idl
- *mathematica
- *matlab
- *etc...

WWW server
OpenSSH server

Control PC

OpenSSH server