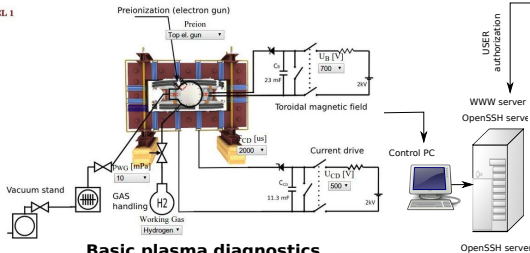


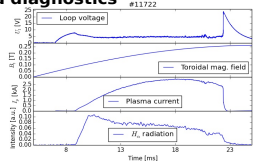
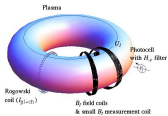
The global schematic overview of the GOLEM experiment

LEVEL 1

Tokamak technology setup



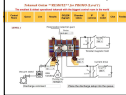
Basic plasma diagnostics



Virtual control room (remote participation)

WWW control interface

HTML & PHP scripts



SSH control interface

WINDOWS via putty



LINUX via ssh or ssh+X tunnel (advanced mode)

Data presentation

HTML (www pages)



Data handling

- *wget
- *gnuplot
- *idl
- *mathematica
- *matlab
- *etc...