

## Introduction to the tokamak operation (GOLEM specific) - Level 1

Vojtěch Svoboda  
on behalf of the tokamak GOLEM team  
for the Greifswald high school, Germany..

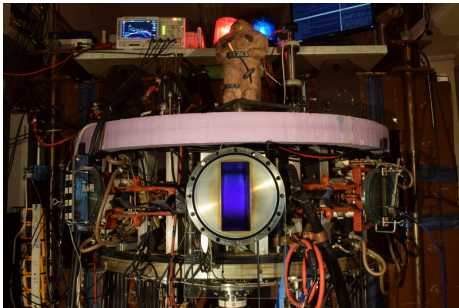
June 8, 2023

# Table of Contents

- 1 Introduction
- 2 The Tokamak (GOLEM)
- 3 The Tokamak GOLEM (remote) operation
- 4 Conclusion
- 5 Appendix

# The GOLEM tokamak basic characteristics

*The grandfather of all tokamaks (ITER newslines 06/18)*



- Vessel major radius:  $R_0 = 0.4$  m
- Vessel minor radius:  $r_0 = 0.1$  m
- Maximum plasma current:  
 $I_p^{\max} < 8$  kA
- Maximum toroidal magnetic field:  $B_t^{\max} < 0.5$  T
- Typical electron density:  
 $\langle n_e \rangle \in (0.2, 3) \cdot 10^{19} \text{ m}^{-3}$
- Maximum electron temperature:  
 $T_e^{\max} < 80$  eV
- Maximum discharge duration:  
 $\tau_p^{\max} < 25$  ms


# Tokamak GOLEM @ Wikipedia ..

File Edit View Go Bookmarks Tools Settings Window Help

home Kalendarj Produkce Forecast Slovnik Rano

Not logged in Talk Contributions Create account Log in

Article **Tokamak** Read Edit View history

 **WIKIPEDIA**  
The Free Encyclopedia

Main page  
Contents  
Featured content  
Current events

From Wikipedia, the free encyclopedia

*This article is about the fusion reaction device. For other uses, see [Tokamak \(disambiguation\)](#).*

A **tokamak** (**Russian**: **токамак**) is a device that uses a powerful **magnetic field** to confine **plasma** in the shape of a **torus**. Achieving a **stable plasma equilibrium** requires **magnetic field lines** that move around the torus in a **helical** shape. Such a helical field can be generated by adding a **toroidal** field


it decays into a proton and electron with the emission of energy. When the time comes to actually try to make electricity from a tokamak-based reactor, some of the neutrons produced in the fusion process would be absorbed by a liquid metal blanket and their kinetic energy would be used in heat-transfer processes to ultimately turn a generator.

## Experimental tokamaks [ edit ]

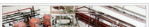
### Currently in operation [ edit ]

(in chronological order of start of operations)

- 1960s: TМ1-MH (since 1977 Castor; since 2007 Golem<sup>[12]</sup>) in **Prague, Czech Republic**. In operation in **Kurchatov Institute** since early 1960s but renamed to **Castor** in 1977 and moved to **IPP CAS**,<sup>[13]</sup> Prague; in 2007 moved to **FNSPE, Czech Technical University in Prague** and renamed to **Golem**.<sup>[14]</sup>
- 1975: **T-10**, in **Kurchatov Institute, Moscow, Russia** (formerly **Soviet Union**); 2 MW
- 1983: **Joint European Torus (JET)**, in **Culham, United Kingdom**
- 1985: **JT-60**, in **Naka, Ibaraki Prefecture, Japan**; (Currently undergoing upgrade to Super, Advanced model)
- 1987: **STOR-M**, **University of Saskatchewan; Canada**; first demonstration of alternating current in a tokamak.
- 1988: **Tore Supra**,<sup>[15]</sup> at the **CEA, Cadarache, France**
- 1989: **Aditya**, at **Institute for Plasma Research (IPR) in Gujarat, India**
- 1980s: **DIII-D**,<sup>[16]</sup> in **San Diego, USA**; operated by **General Atomics** since the late 1980s
- 1989: **COMPASS**,<sup>[13]</sup> in **Prague, Czech Republic**; in operation since 2008, previously operated from 1989 to 1999 in **Culham, United Kingdom**
- 1990: **FTU**, in **Frascati, Italy**
- 1991: **Tokamak ISTTOK**,<sup>[17]</sup> at the **Instituto de Plasmas e Fusão Nuclear, Lisbon, Portugal**;
- 1991: **ASDEX Upgrade**, in **Garching, Germany**

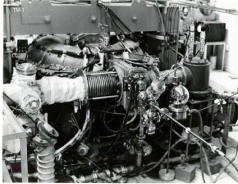


Alcator C-Mod



# The GOLEM tokamak for education - historical background

Kurchatov Institute near Moscow,  
Soviet Union  
1960: **TM1-MH**



1974



Culham Centre for Fusion Energy  
Great Britain  
1989: **COMPASS-D**



2006



Institute of Plasma Physics  
Czech republic  
**CASTOR**      **COMPASS**



2008



Czech Technical University Prague  
Czech republic  
**GOLEM**



# GOLEM

... somewhere, in the ancient cellars of Prague,

*there is hidden indeed "infernal" power. Yet it is the very power of celestial stars themselves. Calmly dormant, awaiting mankind to discover the magic key, to use this power for their benefit. . .*

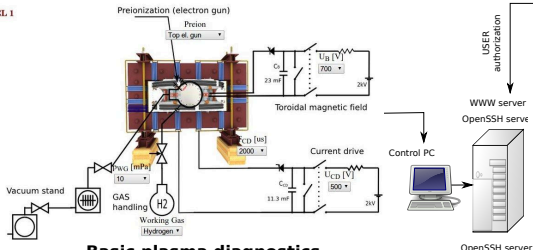


At the end of the 16th century, in the times when the Czech lands were ruled by Emperor Rudolf II, in Prague, there were Rabbi Judah Loew, well known alchemist, thinker, scholar, writer and inventor of the legendary GOLEM - a clay creature inspired with the Universe power that pursued his master's command after being brought to life with a shem, . Golem is not perceived as a symbol of evil, but rather as a symbol of power which might be useful but is very challenging to handle. To learn more of the Golem legend, see e.g. [1].

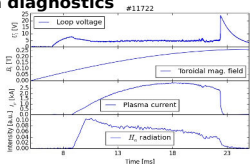
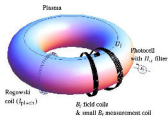
# The global schematic overview of the GOLEM experiment

LEVEL 1

## Tokamak technology setup



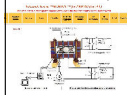
## Basic plasma diagnostics



## Virtual control room (remote participation)

### WWW control interface

#### HTML & PHP scripts



### SSH control interface

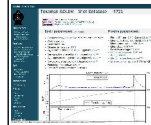
#### WINDOWS via putty



LINUX via ssh  
or ssh+X tunnel  
(advanced mode)

### Data presentation

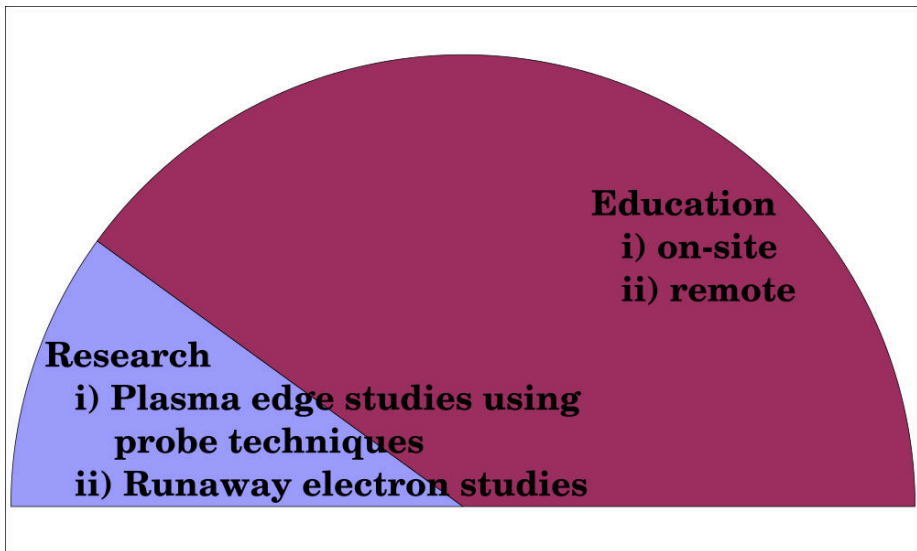
#### HTML (www pages)



### Data handling

- \*wget
- \*gnuplot
- \*idl
- \*mathematica
- \*matlab
- \*etc...

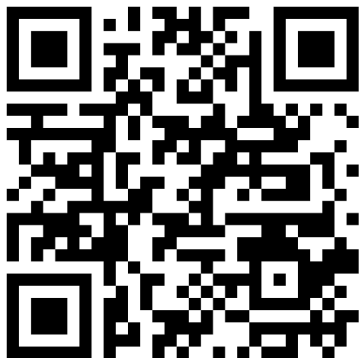
# The GOLEM tokamak mission





# Production

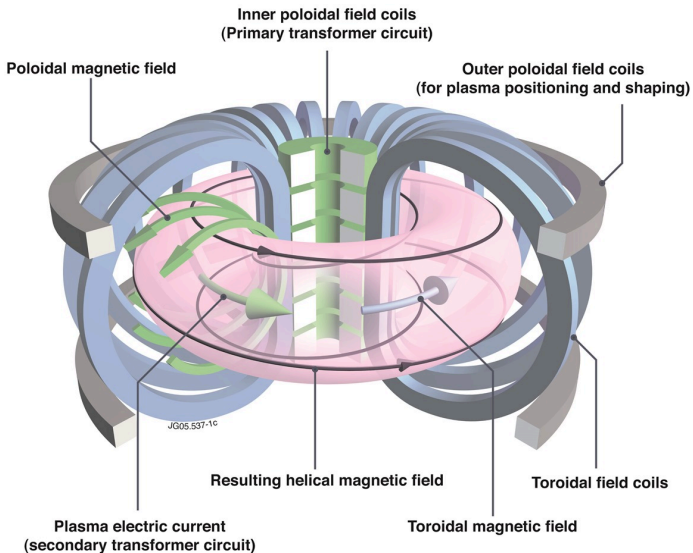
- Everything via <http://golem.fjfi.cvut.cz/Greifswald>
  - This presentation
  - Control rooms
  - Contact: Vojtech Svoboda,  
+420 737673903,  
[svoboda@fjfi.cvut.cz](mailto:svoboda@fjfi.cvut.cz)
  - Chat:  
[tokamak.golem@gmail.com](mailto:tokamak.golem@gmail.com) or  
skype: tokamak.golem
  - Videoconference:  
<https://meet.google.com/hnv-qjhu-xvi>



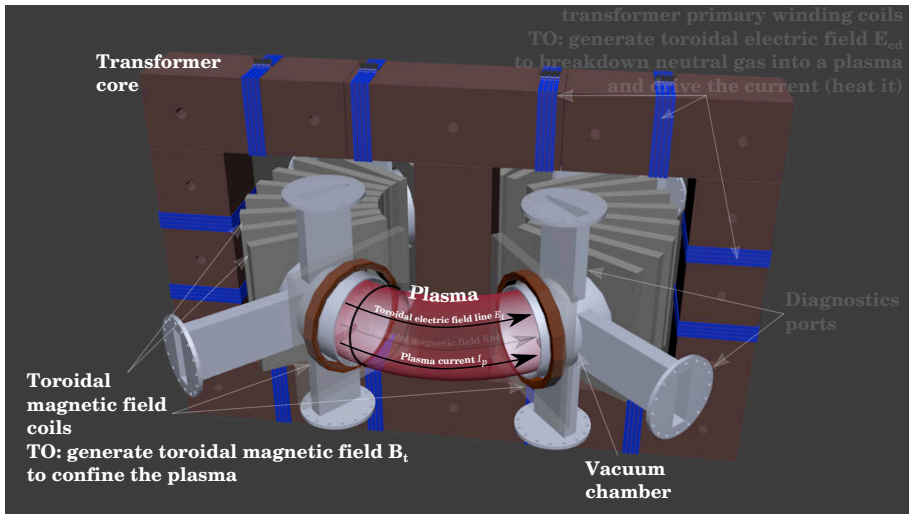
# Table of Contents

- 1 Introduction
- 2 The Tokamak (GOLEM)**
- 3 The Tokamak GOLEM (remote) operation
- 4 Conclusion
- 5 Appendix

# Tokamak magnetic confinement concept



# Tokamak (GOLEM) basic concept to confine and heat the plasma



# Table of Contents

## 1 Introduction

## 2 The Tokamak (GOLEM)

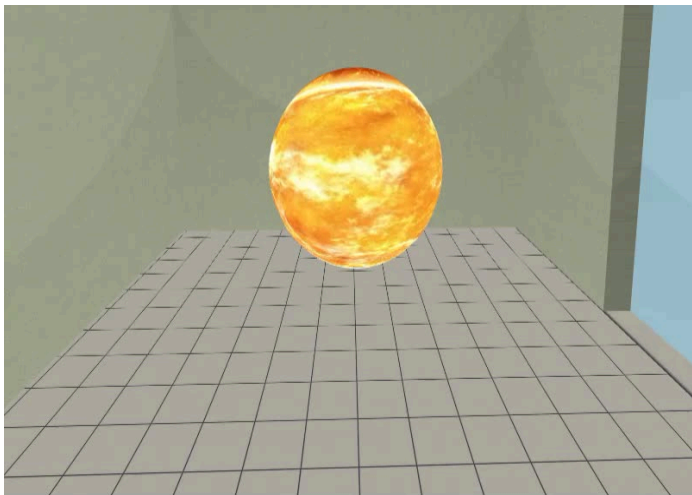
- The GOLEM tokamak concept
- The scenario to make the (GOLEM) tokamak discharge
- The scenario to discharge virtually
- The GOLEM tokamak basic diagnostics
- The GOLEM tokamak - guide tour

## 3 The Tokamak GOLEM (remote) operation

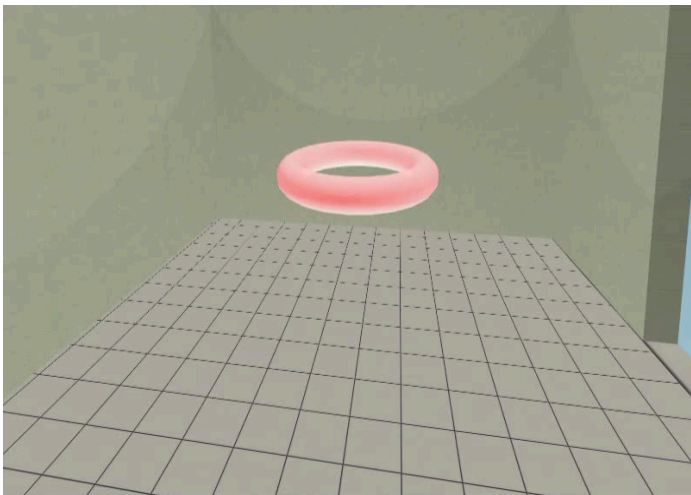
## 4 Conclusion

## 5 Appendix

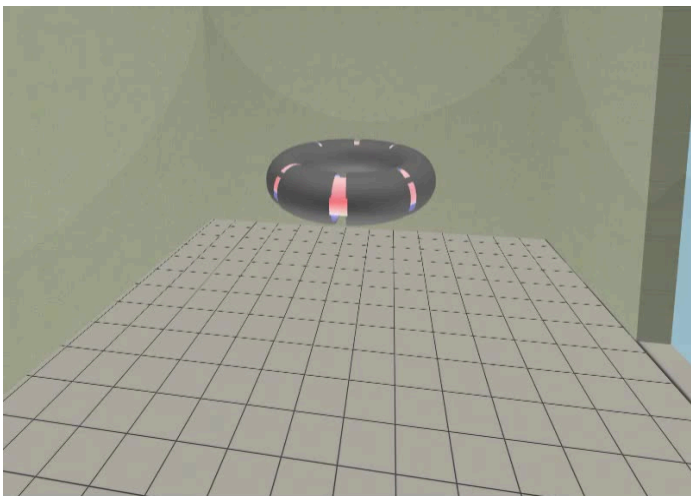
Our goal: the technology to create a  $\mu$ Sun on the Earth



# Magnetic confinement requires toroidal geometry

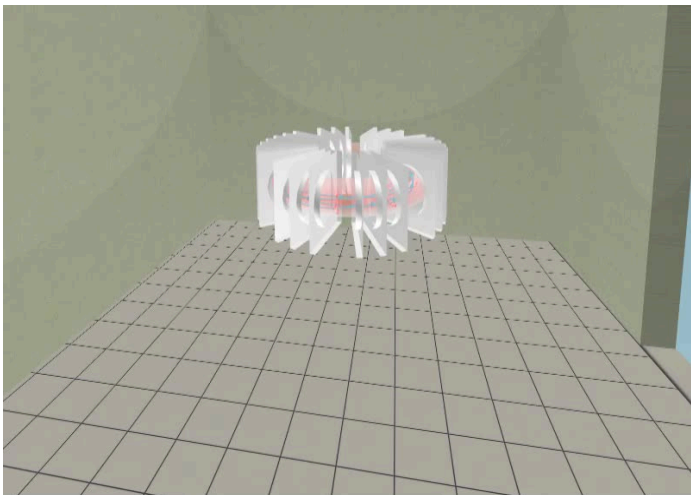


A chamber contains the thermonuclear reaction

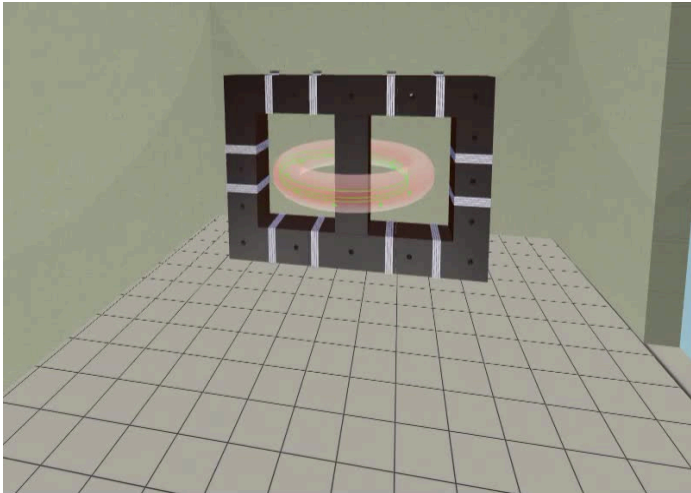




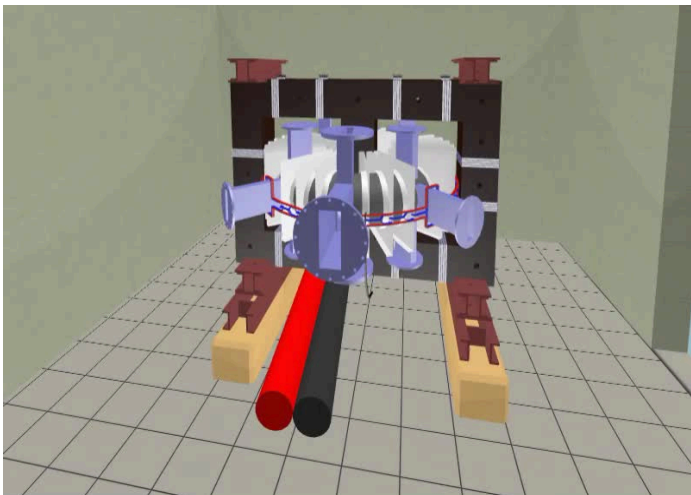
Toroidal magnetic field coils confine the plasma



A transformer action creates and heats the plasma



# The final technology altogether



# Table of Contents

## 1 Introduction

## 2 The Tokamak (GOLEM)

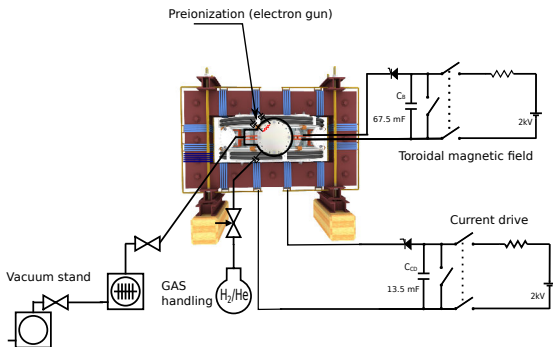
- The GOLEM tokamak concept
- The scenario to make the (GOLEM) tokamak discharge
- The scenario to discharge virtually
- The GOLEM tokamak basic diagnostics
- The GOLEM tokamak - guide tour

## 3 The Tokamak GOLEM (remote) operation

## 4 Conclusion

## 5 Appendix

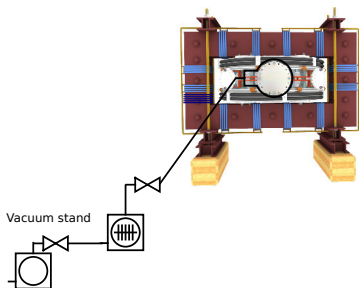
# Plasma in Tokamak (GOLEM) - the least to do



## To do:

- session start phase:
  - Evacuate the chamber
- pre-discharge phase
  - Charge the capacitors
  - Fill in the working gas
  - Preionization
- discharge phase
  - Toroidal magnetic field to confine plasma
  - Toroidal electric field to breakdown neutral gas into plasma
  - Toroidal electric field to heat the plasma
  - Plasma positioning
  - Diagnostics
- post-discharge phase

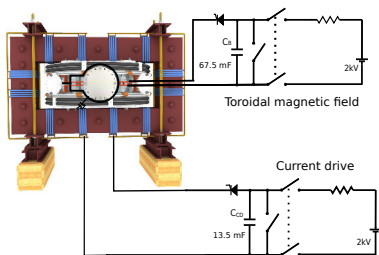
# Plasma in Tokamak (GOLEM) - the least to do



## To do:

- session start phase:
  - **Evacuate the chamber**
- pre-discharge phase
  - Charge the capacitors
  - Fill in the working gas
  - Preionization
- discharge phase
  - Toroidal magnetic field to confine plasma
  - Toroidal electric field to breakdown neutral gas into plasma
  - Toroidal electric field to heat the plasma
  - Plasma positioning
  - Diagnostics
- post-discharge phase

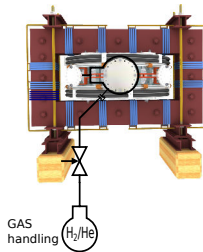
# Plasma in Tokamak (GOLEM) - the least to do



## To do:

- session start phase:
  - Evacuate the chamber
- pre-discharge phase
  - **Charge the capacitors**
  - Fill in the working gas
  - Preionization
- discharge phase
  - Toroidal magnetic field to confine plasma
  - Toroidal electric field to breakdown neutral gas into plasma
  - Toroidal electric field to heat the plasma
  - Plasma positioning
  - Diagnostics
- post-discharge phase

# Plasma in Tokamak (GOLEM) - the least to do

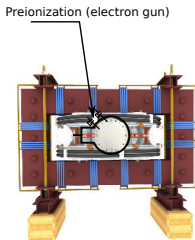


## To do:

- session start phase:
  - Evacuate the chamber
- pre-discharge phase
  - Charge the capacitors
  - **Fill in the working gas**
  - Preionization
- discharge phase
  - Toroidal magnetic field to confine plasma
  - Toroidal electric field to breakdown neutral gas into plasma
  - Toroidal electric field to heat the plasma
  - Plasma positioning
  - Diagnostics
- post-discharge phase



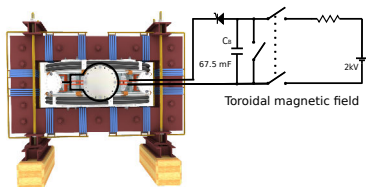
# Plasma in Tokamak (GOLEM) - the least to do



## To do:

- session start phase:
  - Evacuate the chamber
- pre-discharge phase
  - Charge the capacitors
  - Fill in the working gas
  - **Preionization**
- discharge phase
  - Toroidal magnetic field to confine plasma
  - Toroidal electric field to breakdown neutral gas into plasma
  - Toroidal electric field to heat the plasma
  - Plasma positioning
  - Diagnostics
- post-discharge phase

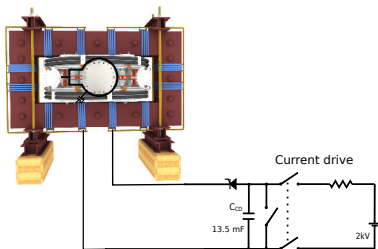
# Plasma in Tokamak (GOLEM) - the least to do



## To do:

- session start phase:
  - Evacuate the chamber
- pre-discharge phase
  - Charge the capacitors
  - Fill in the working gas
  - Preionization
- discharge phase
  - **Toroidal magnetic field to confine plasma**
  - Toroidal electric field to breakdown neutral gas into plasma
  - Toroidal electric field to heat the plasma
  - Plasma positioning
  - Diagnostics
- post-discharge phase

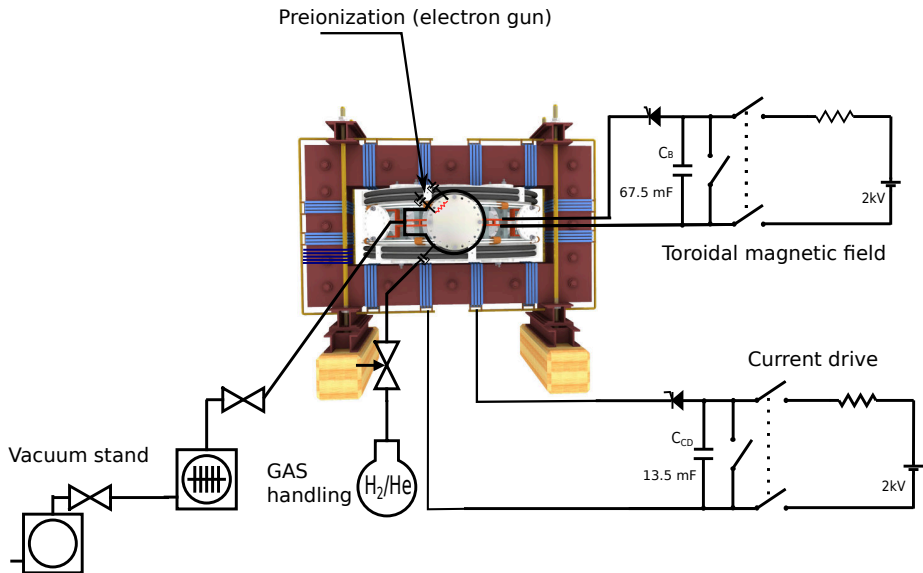
# Plasma in Tokamak (GOLEM) - the least to do



## To do:

- session start phase:
  - Evacuate the chamber
- pre-discharge phase
  - Charge the capacitors
  - Fill in the working gas
  - Preionization
- discharge phase
  - Toroidal magnetic field to confine plasma
  - **Toroidal electric field to breakdown neutral gas into plasma**
  - **Toroidal electric field to heat the plasma**
  - Plasma positioning
  - Diagnostics
- post-discharge phase

# Tokamak GOLEM - schematic experimental setup



# Table of Contents

## 1 Introduction

## 2 The Tokamak (GOLEM)

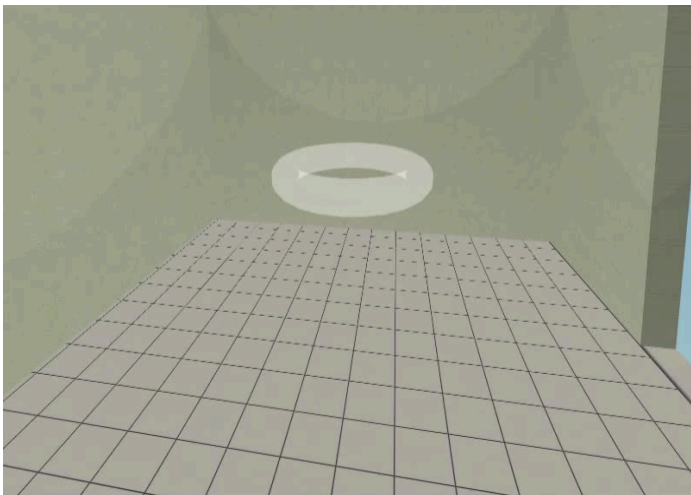
- The GOLEM tokamak concept
- The scenario to make the (GOLEM) tokamak discharge
- The scenario to discharge virtually
- The GOLEM tokamak basic diagnostics
- The GOLEM tokamak - guide tour

## 3 The Tokamak GOLEM (remote) operation

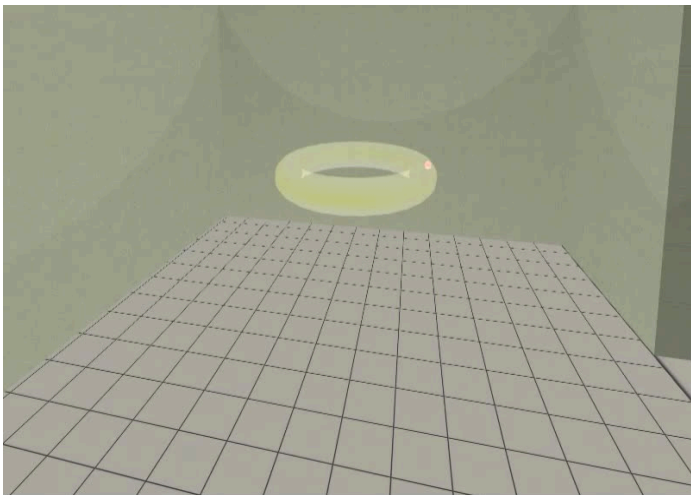
## 4 Conclusion

## 5 Appendix

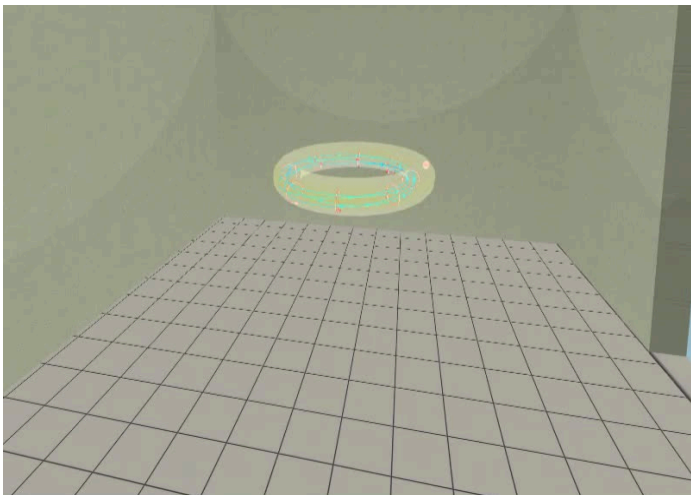
Introduce the working gas (Hydrogen x Helium)



Switch on the preionization

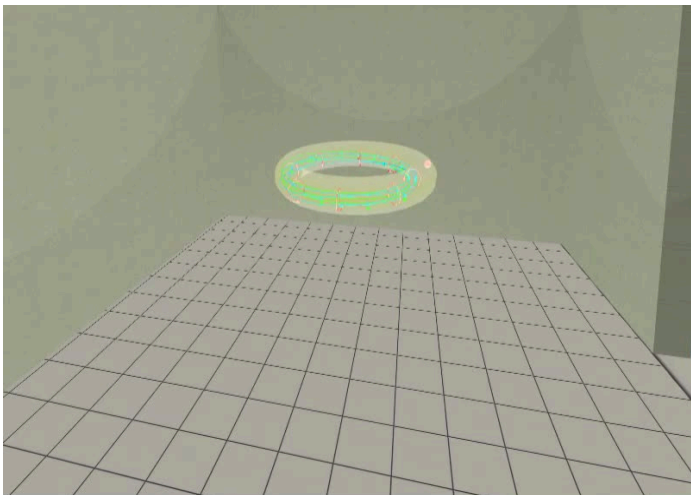


# Introduce the magnetic field

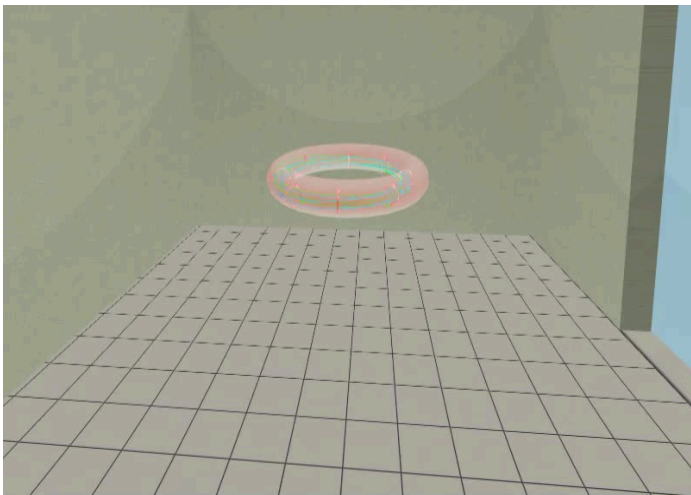




# Introduce the electric field



# Plasma ..



# Table of Contents

## 1 Introduction

## 2 The Tokamak (GOLEM)

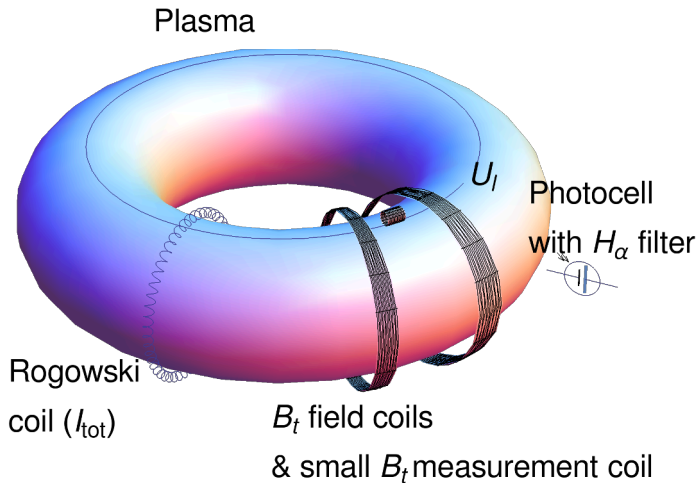
- The GOLEM tokamak concept
- The scenario to make the (GOLEM) tokamak discharge
- The scenario to discharge virtually
- The GOLEM tokamak basic diagnostics
- The GOLEM tokamak - guide tour

## 3 The Tokamak GOLEM (remote) operation

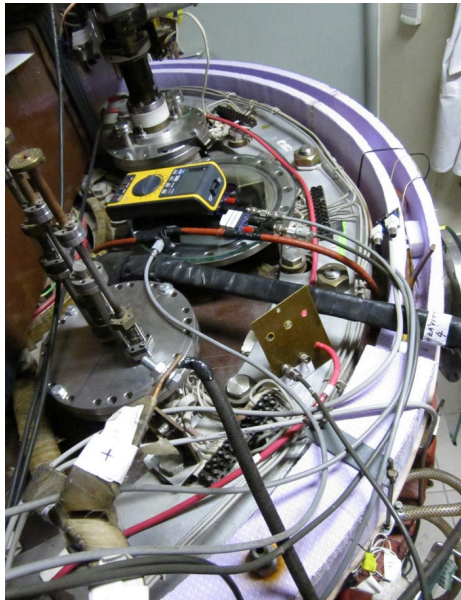
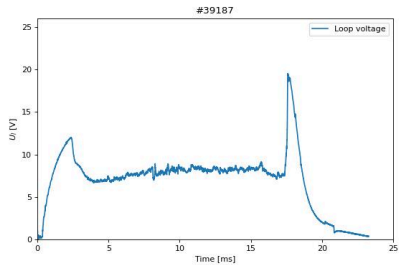
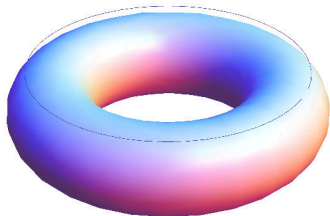
## 4 Conclusion

## 5 Appendix

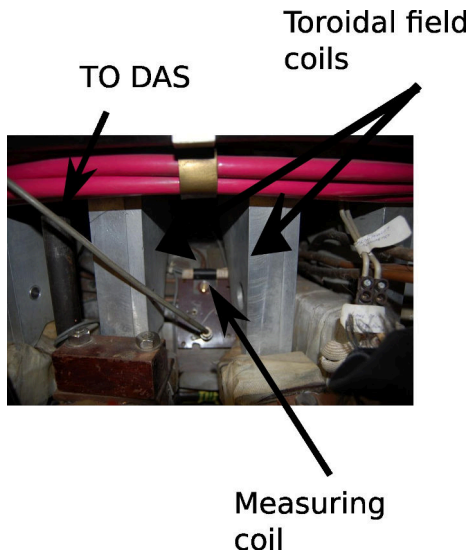
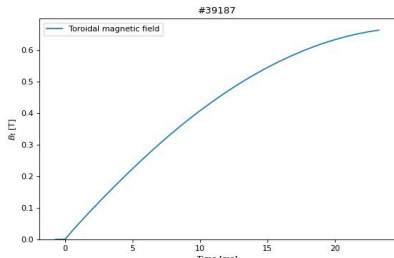
# The GOLEM tokamak - basic diagnostics



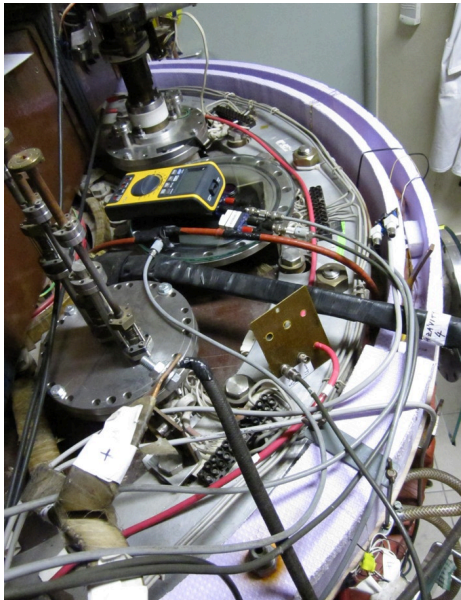
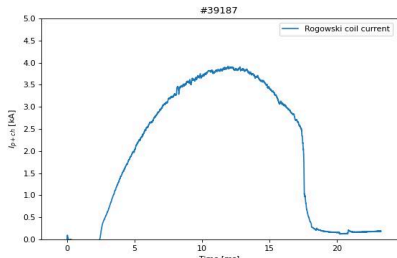
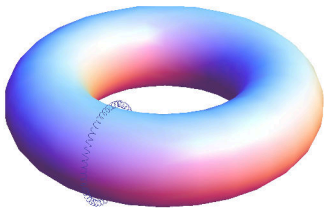
# Loop voltage $U_l$ @ the GOLEM tokamak



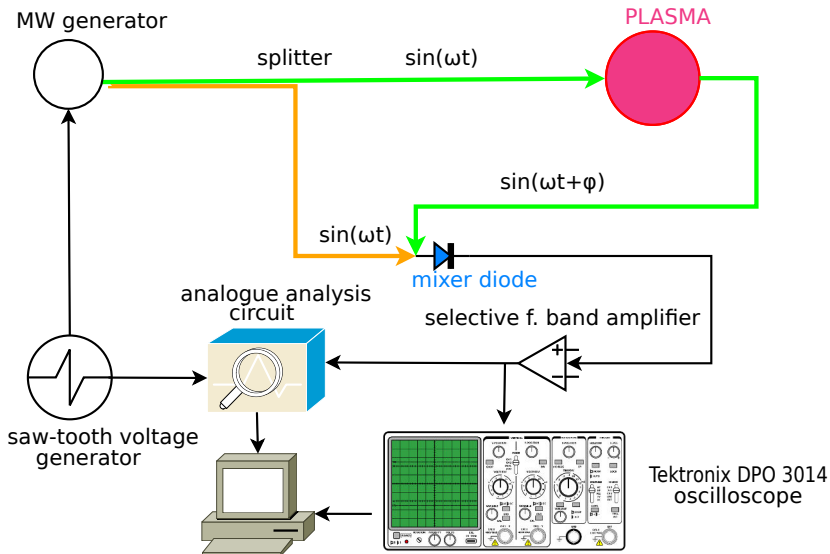
# Toroidal magnetic field $B_t$ @ the tokamak GOLEM



# Total current $I_{ch+p}$

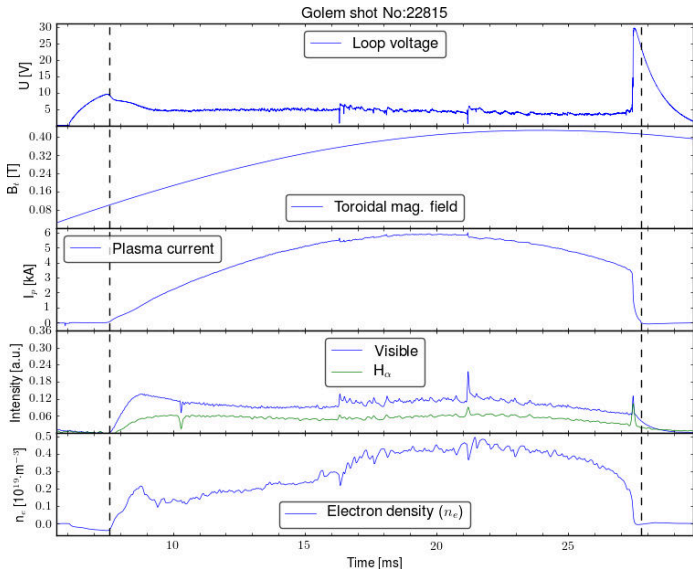


# Electron density $n_e$ interferometry measurement scheme





# "Typical", well executed discharge @ GOLEM



# Table of Contents

## 1 Introduction

## 2 The Tokamak (GOLEM)

- The GOLEM tokamak concept
- The scenario to make the (GOLEM) tokamak discharge
- The scenario to discharge virtually
- The GOLEM tokamak basic diagnostics
- The GOLEM tokamak - guide tour

## 3 The Tokamak GOLEM (remote) operation

## 4 Conclusion

## 5 Appendix

# Infrastructure room (below tokamak) 10/16



# Infrastructure room (below tokamak) 10/16

Current drive CD field  
and toroidal magnetic Bt field  
circuits

To the tokamak  
GOLEM

Rotary  
pump

Vacuum  
control

Current drive CD  
capacitors

Plasma  
stabilization

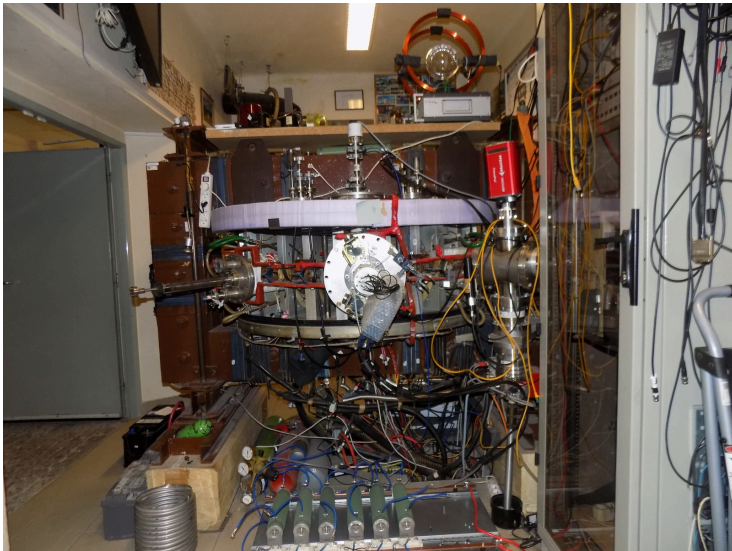
power  
supply  
2kV

Toroidal  
magnetic field B  
capacitors

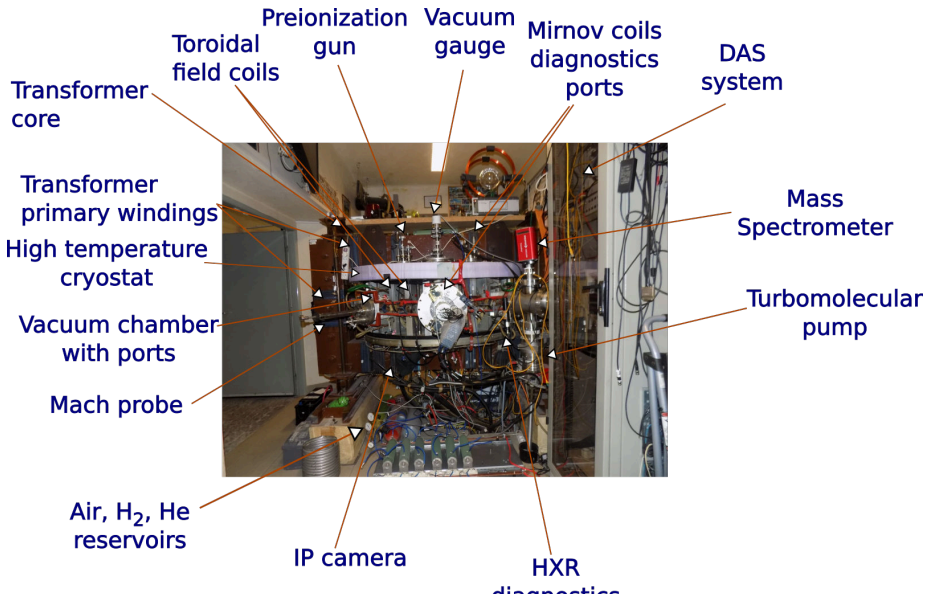
fire  
protection  
system



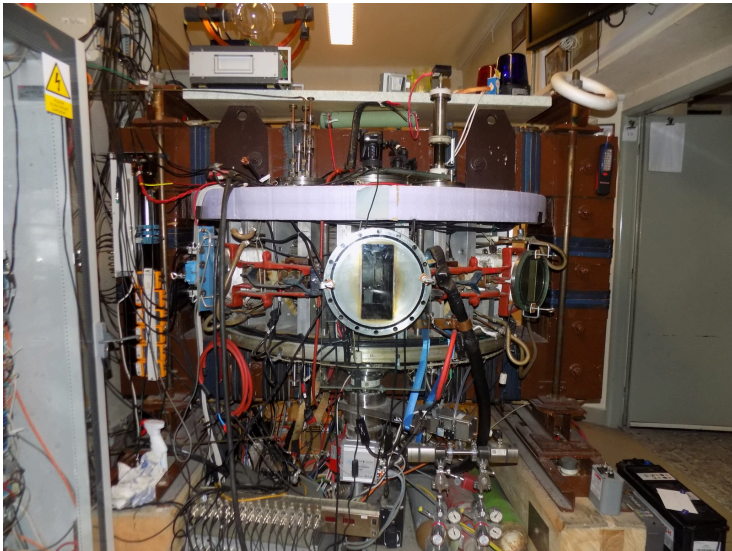
# Tokamak room (North) 10/16



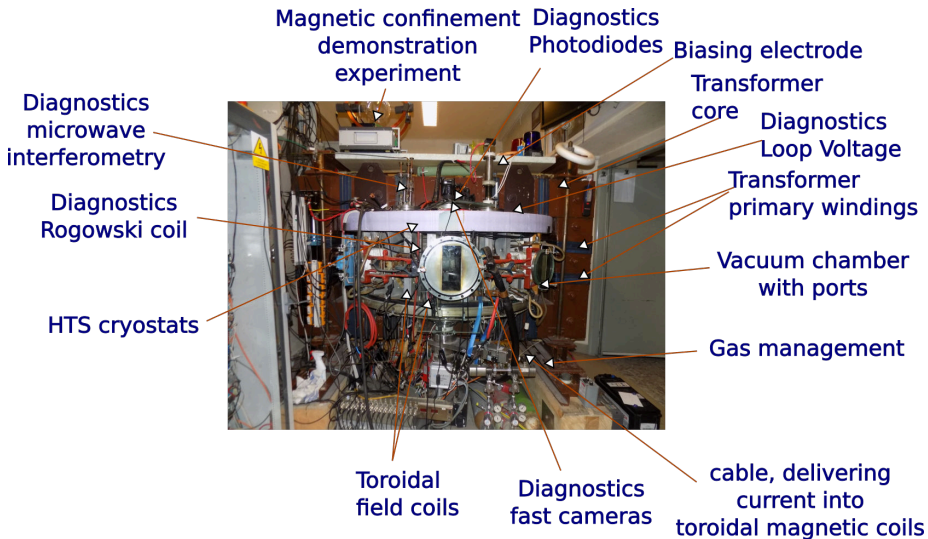
# Tokamak room (North) 10/16



# Tokamak room (South) 10/16



# Tokamak room (South) 10/16





# Table of Contents

- 1 Introduction
- 2 The Tokamak (GOLEM)
- 3 The Tokamak GOLEM (remote) operation**
- 4 Conclusion
- 5 Appendix

# Table of Contents

- 1 Introduction
- 2 The Tokamak (GOLEM)
- 3 The Tokamak GOLEM (remote) operation**
  - Control room
  - Data handling @ the Tokamak GOLEM
- 4 Conclusion
- 5 Appendix

# Control room: Introduction

GOLEM remote Introduction **Control room** Live Results

Prague Access: Level 1 Help

Introduction Working gas Preionization Magnetic field Current drive Submit

This web interface will walk you through the process of configuring a discharge in the GOLEM tokamak. All settable values are perfectly safe. Proceed through each step by setting the desired values and then clicking the [Next](#) button. You can always go to a specific step by clicking its tab.

**Preionization (electron gun)**

Vacuum stand

GAS  $H_2/He$

Toroidal magnetic field

Current drive

23 mF  $C_p$

11.3 mF  $C_o$

2kV

2kV

3D model rendering method: **Static image (fast)** Interactive X3DOM (slower)

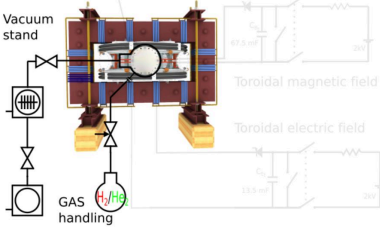
# Control room: Working gas

GOLEM remote Introduction Control room Live Results

Introduction Working gas Preionization Magnetic field Electric field Submit

Set the pressure and type of the working gas from which the plasma is formed. Pressure must be high enough for plasma to form, but low enough for gas breakdown to occur.

### Preionization (electron gun)



Vacuum stand

GAS handling  $H_2/H_9$

Toroidal magnetic field

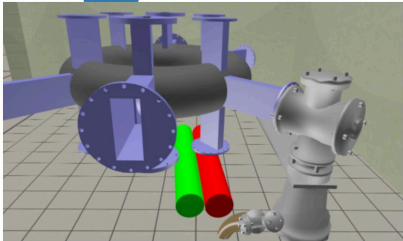
Toroidal electric field

Gas type and pressure  $p_{gas}$ : 38 mPa

Hydrogen Helium

Next Set recommended value

3D model rendering method Static image (best) Interactive X3DOM (preview)



# Control room: Preionization

GOLEM remote Introduction Control room Live Results

Introduction Working gas Preionization Magnetic field Electric field Submit

The neutral working gas must first be ionized in order to break down into a plasma. Using the electron gun will locally ionize the gas. Without any ionization, no plasma can form.

### Preionization (electron gun)

Vacuum stand

GAS handling

Toroidal magnetic field

Toroidal electric field

67.5 mH

20V

13.5 mF

20V

ionization method

Electron gun  No ionization

Next

3D model rendering method Static image (best) Interactive X3DOM (preview)

# Control room: Magnetic field $B_t$

GOLEM version: Introduction Control room Live Results

Press F11 to exit full screen  
3D model rendering method: Static image (best) Interactive X3DOM (viewer)

Introduction Working gas Preionization **Magnetic field** Electric field Submit

Set the voltage on the capacitors to be discharged into the toroidal field coils. The higher the voltage, the larger the magnetic field confining the plasma.

Preionization (electron gun)

Vacuum stand

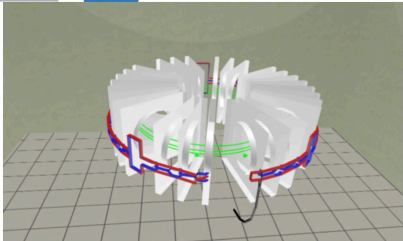
Toroidal magnetic field

Toroidal electric field

GAS handling

Capacitor voltage  $U_{C_2} = 600$  V

Next Set recommended value



# Control room: Current drive $E_{cd}$

GOLEM remote Introduction Control room Live Results

the Torneo Politecnico, Italy Group 1 Access: Level 2 Help

Introduction Working gas Preionization Magnetic field **Electric field** Submit

Set the voltage on the capacitors to be discharged into the [primary transformer winding](#). The higher the voltage, the larger the electric field creating and heating the plasma. The electric field capacitors are discharged after a configurable delay with respect to the magnetic field capacitors.

Preionization (electron gun)

Vacuum stand

Toroidal magnetic field

Toroidal electric field

GAS handling

Time delay of electric field start after the magnetic field starts  $t_{cd}$ : 0 micro seconds

Capacitor voltage  $U_{cd}$ : 400 V

Next Set recommended value

3D model rendering method Static image (best) Interactive X3DOM (preview)

# Control room: ... and Submit

GOLEM remote Introduction Control room Live Results

the Torneo Politecnico, Italy Group 1 Access: Level 2 Help

Introduction Working gas Preionization Magnetic field Electric field **Submit**

Write a comment describing your discharge configuration, i.e. the scientific aim of your experiment. Or just leave a friendly message.

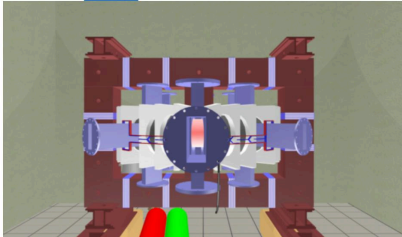
Comment

Click the Submit button to send your configuration into the queue. **Submit**

After submission you can watch the discharge Live or go back to the Introduction tab and start again. Or you can go to specific control tabs and reconfigure the discharge and then submit another discharge request.

[Watch the discharge Live!](#) [Go back to Introduction](#)


3D model rendering method: [Static image \(best\)](#) [Interactive X3DOM \(slower\)](#)





# Shot homepage ( $\approx 2$ minutes after discharge execution)

GOLEM # Shot #40631
autoreload



**Diagnostics**

BasicDiagnostics  
DoubleRakeProbe  
Interferometry  
LimiterFlareCoils  
ScribbleProbes

**Other**

View Showroom

**Navigation**

Next  
Previous  
Current

**Go to shot**  
40631

**GOLEM utils**

Home  
Plot data  
Shot interval plot  
Manipulators control

**Database operations**

Shots listing  
Shots filtering

## Tokamak GOLEM - Shot Database - #40631

**The date of discharge execution** 23-02-07 17:23:54

**The session mission** 1Final -> Dringent service

**The session ID** 40605

**The discharge comment** Rake probe 50mm

**Discharge command** jDringent.sh --discharge --UBt 800 --Tbt 0 --Utd 450 --Tod 500 --preionization 1 --gas H --pre issue 15 --diagnostics.limiterflarescoils.vacuum\_shot=40615F --discharge.preionization "m air\_switch=on;powsup\_heater=80;powsup\_accel=100" --infrastructure.position\_stabilization "main\_switch=on;radial\_switch=on;vertical\_waveform=1000,0.8000,-20,10000,-25,12000,-10,30000,0;vertical\_switch=on;radial\_waveform=2000,0.3000,0.7000,-20,9500,-25,10000,-20,30000,2,25000,0" --ScanDefinition 40625 40629F --comment "Rake probe 50mm"

[Shot Logbook]

**Technological parameters**

- Working Gas:  $P_{discharge, before} = 2.46$  mPa;  $P_{discharge, pre} = 5.04$  mPa ( $P_{WG}^{response} = 15$  mPa @  $\Delta T_{WG}^{response} = H$ )
- Toroidal magnetic field:  $U_{B_t}^{response} = 800$  V @  $I_{B_t}^{response} = 0.0$  us
- Current drive field:  $U_{Ecu}^{response} = 450$  V @  $I_{Ecu}^{response} = 500.0$  us

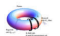
**Plasma:**

- Plasma: yes or no:
- Time parameters:  $\Delta T_p = 10.88$  ms ( $t_{rom_start} = 2.67$  ms,  $t_{rom_end} = 13.54$  ms)

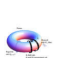

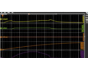
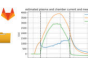

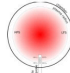

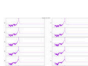


**Plasma parameters:**

- Loop voltage:  $\bar{U}_{loop} = 6.82$  V;  $max_{T_{inj}}(I_{discharge})$ ;  $U_{loop} = 16.17$  V;  $U_{breakdown} = 0.00$  V
- Toroidal magnetic field:  $B_t = 0.24$  T;  $max_{T_{inj}}(I_{discharge})$ ;  $B_t = -0.36$  T
- Plasma current:  $I_p = 2.28$  kA;  $max_{T_{inj}}(I_{discharge})$ ;  $I_p = 2.92$  kA;  $t_p^{max} = 0.00$  ms

## Basic Diagnostics



## On stage diagnostics

	Data flow	measurement	digitization	analysis	
Name	Experiment setup	Data acquisition system	Raw data	Analysis results	
<b>Basic Diagnostics</b> 					
<b>Double rake probe</b> 				<b>Without Analysis</b> 	

# Table of Contents

- 1 Introduction
- 2 The Tokamak (GOLEM)
- 3 The Tokamak GOLEM (remote) operation**
  - Control room
  - Data handling @ the Tokamak GOLEM
- 4 Conclusion
- 5 Appendix

# GOLEM basic Data Acquisition System (DAS)

- $U_I, U_{B_t}, U_{I_{p+ch}}, I_{rad}$
- $\Delta t = 1\mu s / f = 1MHz$ .
- Integration time = 40 ms, thus DAS produces 6 columns x 40000 rows data file.
- Discharge is triggered at 5th millisecond after DAS to have a zero status identification.



Data file example, DAS  $\Delta t = 1\mu s / f = 1MHz$  (neutral gas into plasma breakdown focused)

$t$	$\approx U_I$	$\approx U_{\frac{dB_T}{dt}}$	$\approx U_{\frac{d(I_{p+ch})}{dt}}$	$\approx I_{rad}$
:	:	:	:	:
:	:	:	:	:
first	$\approx$	7405	lines ..	:
:	:	:	:	:
:	:	:	:	:
0.007383	1.53931	0.390015	0.048828	0.001831
0.007384	1.53686	0.395508	0.067749	0.00061
0.007385	1.54053	0.391235	0.079956	0.00061
0.007386	1.53686	0.38147	0.072632	0
0.007387	1.54297	0.397949	0.059204	0.00061
0.007388	1.54053	0.384521	0.05249	0.00061
0.007389	1.54053	0.39856	0.068359	0.001221
0.00739	1.54053	0.393677	0.082397	0.001221
0.007391	1.53809	0.38208	0.072632	0.001221
0.007392	1.54297	0.400391	0.056763	0.00061
0.007393	1.54419	0.383911	0.053101	0.00061
0.007394	1.53931	0.397339	0.068359	0.001221
0.007395	1.54297	0.391846	0.084229	0.00061
0.007396	1.54541	0.394897	0.074463	0.00061
0.007397	1.54297	0.388184	0.056763	0.001221
0.007398	1.54297	0.391846	0.056763	0.00061
0.007399	1.54297	0.394287	0.06897	0.00061
:	:	:	:	:
:	:	:	:	:
next	$\approx$	32500	lines ..	:
:	:	:	:	:
:	:	:	:	:

# Data access

All the recorded data and the settings for each discharge (shot) are available at the GOLEM website. The root directory for the files is:

```
http://golem.fjfi.cvut.cz/shots/<#ShotNo>/
```

The most recent discharge has the web page:

```
http://golem.fjfi.cvut.cz/shots/0
```

Particular data from DAS specified with <DASname> and <DASchannelidentifier> have the format:

```
http:  
//golem.fjfi.cvut.cz/<#ShotNo>/<DASname>/<DASchannelidentifier>
```

# Jupyter (python)

```
1 import numpy as np
2 import matplotlib.pyplot as plt
3
4 shot_no = 39187
5 identifier = "U_Loop.csv"
6 DAS='Diagnostics/BasicDiagnostics/'
7 # create data cache in the 'golem_cache' folder
8 ds = np.DataSource('golem_cache')
9 #Create a path to data and download and open the file
10 base_url = "http://golem.fjfi.cvut.cz/shots/"
11 data_file = ds.open(base_url + str(shot_no)+ '/' +DAS +identifier)
12 #Load data from the file and plot to screen and to disk
13 data = np.loadtxt(data_file,delimiter=",")
14 plt.title('#'+str(shot_no))
15 plt.plot(data[:,0]*1000, data[:,1]) #1. column vs 2. column
16 plt.xlabel('Time [ms]');plt.ylabel('$U_1$ [V]');
17 plt.savefig('graph.jpg')
18 plt.show()
19
20 #Run it: save it as script.py and run "python script.py" or execute in a
```

# Matlab

```
1 ShotNo=39187
2 baseURL='http://golem.fjfi.cvut.cz/shots/';
3 diagnPATH='/Diagnostics/BasicDiagnostics/U_Loop.csv';
4 %Create a path to data
5 dataURL=strcat(baseURL,int2str(ShotNo),diagnPATH);
6 % Write data from GOLEM server to a local file
7 urlwrite(dataURL,'LoopVoltage');
8 % Load data
9 data = load('LoopVoltage', '\t');
10 % Plot and save the graph
11 f = figure('visible', 'off');
12 hold on
13 plot(data(:,1)*1000, data(:,2), '.');
14 xlabel('Time [ms]')
15 ylabel('U_1 [V]')
16 hold off
17 print -djpeg plot.jpg
18 close(f)
19 exit;
```

# Octave

```
1 ShotNo=39187
2 baseURL='http://golem.fjfi.cvut.cz/shots/';
3 diagnPATH='/Diagnostics/BasicDiagnostics/U_Loop.csv';
4 %Create a path to data
5 dataURL=strcat(baseURL,int2str(ShotNo),diagnPATH);
6 % Write data from GOLEM server to a local file
7 urlwrite(dataURL,'U_Loop.csv');
8 % Load data
9 data = load('U_Loop.csv', '\t');
10 % Plot and save the graph
11 plot(data(:,1)*1000, data(:,2), '.');
12 xlabel('time [ms]')
13 ylabel('U_{loop} [V]')
14 saveas(gcf, 'plot', 'jpg');
15 exit;
```

# Gnuplot

```
1 identifier = 'U_Loop.csv' ;
2 ShotNo = '39187'
3 # Create a path to the data
4 DAS='Diagnostics/BasicDiagnostics/'
5 baseURL='http://golem.fjfi.cvut.cz/shots/'
6 DataURL= baseURL.ShotNo.'/'.DAS.identifier
7 set datafile separator ',';
8 set title "Uloop for #".ShotNo;
9 # Write data from GOLEM erver to a local file
10 ! wget -q @DataURL ;
11 # Plot the graph from a local file
12 set xrange [0:0.02];set xlabel 'Time [s]';set ylabel 'U_1 [V]'
13 set terminal jpeg
14 plot identifier u 1:2 w l t 'Uloop'
15
16 # Command line: cat script.gp |gnuplot > graph.jpg
```

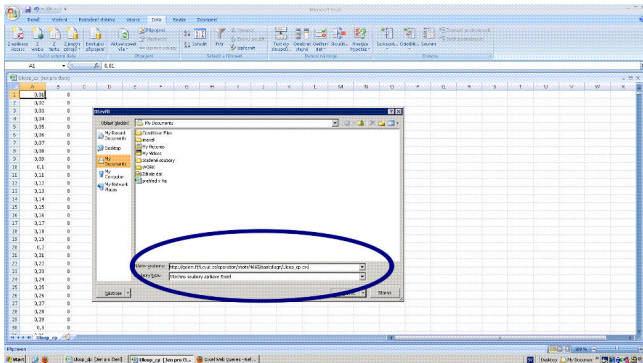


# GNU Wget

GNU Wget is a free software package for retrieving files using HTTP, HTTPS and FTP, the most widely-used Internet protocols. It is a non-interactive commandline tool, so it may easily be called from scripts, cron jobs, terminals without X-Windows support, etc.

- Runs on most UNIX-like operating systems as well as Microsoft Windows.
- Homepage: <http://www.gnu.org/software/wget/>
- Basic usage:
  - To get  $U_l$ : `wget http://golem.fjfi.cvut.cz/utills/data/<#ShotNo>/loop_voltage`
  - To get whole shot: `wget -r -nH -cut-dirs=3 -no-parent -l2 -Pshot http://golem.fjfi.cvut.cz/shots/<#ShotNo>`

# Excel



File→Open→

`http://golem.fjfi.cvut.cz/utils/data/<#ShotNo>/<identifier>`

Spreadsheets (Excel and others)

are not recommended, only tolerated.

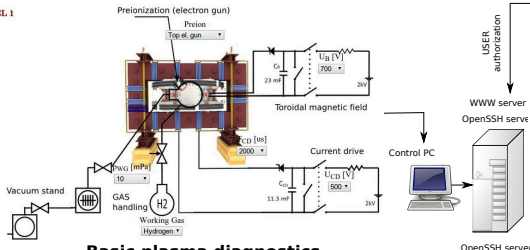
# Table of Contents

- 1 Introduction
- 2 The Tokamak (GOLEM)
- 3 The Tokamak GOLEM (remote) operation
- 4 Conclusion**
- 5 Appendix

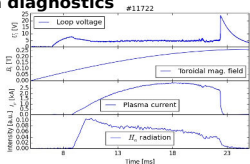
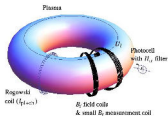
# The global schematic overview of the GOLEM experiment

LEVEL 1

## Tokamak technology setup



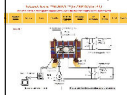
## Basic plasma diagnostics



## Virtual control room (remote participation)

### WWW control interface

#### HTML & PHP scripts



### SSH control interface

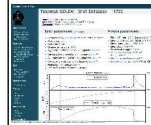
#### WINDOWS via putty



LINUX via ssh  
or ssh+X tunnel  
(advanced mode)

### Data presentation

#### HTML (www pages)



### Data handling

- \*wget
- \*gnuplot
- \*idl
- \*mathematica
- \*matlab
- \*etc...

# Production

- Everything via <http://golem.fjfi.cvut.cz/Greifswald>
  - This presentation
  - Control rooms
  - Contact: Vojtech Svoboda,  
+420 737673903,  
[svoboda@fjfi.cvut.cz](mailto:svoboda@fjfi.cvut.cz)
  - Chat:  
[tokamak.golem@gmail.com](mailto:tokamak.golem@gmail.com) or  
skype: tokamak.golem
  - Videoconference:  
<https://meet.google.com/hnv-qjhu-xvi>





# Acknowledgement

## Financial support highly appreciated:

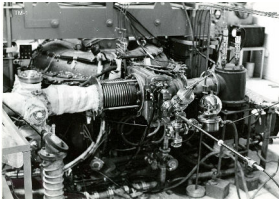
CTU RVO68407700, SGS 17/138/OHK4/2T/14, GAČR GA18-02482S, EU funds CZ.02.1.01/0.0/0.0/16\_019/0000778 and CZ.02.2.69/0.0/0.0/16\_027/0008465, IAEA F13019, FUSENET and EUROFUSION.

## Students, teachers, technicians (random order):

Vladimír Fuchs, Ondřej Grover, Jindřich Kocman, Tomáš Markovič, Michal Odstrčil, Tomáš Odstrčil, Gergo Pokol, Igor Jex, Gabriel Vondrášek, František Žáček, Lukáš Matěna, Jan Stockel, Jan Mlynář, Jaroslav Krbec, Radan Salomonovič, Vladimír Linhart, Kateřina Jiráková, Ondřej Ficker, Pravesh Dhyani, Juan Ignacio Monge-Colepicolo, Jaroslav Čerovský, Bořek Leitl, Martin Himmel. Petr Švihra, Petr Mácha, Vojtěch Fišer, Filip Papoušek, Sergei Kulkov, Martin Imříšek.

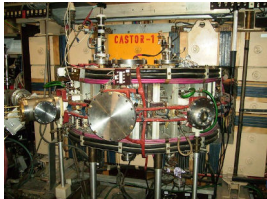
# Thank you for your attention

**Tokamak TM1**  
@Kurchatov Institute near Moscow  
~1960-1977



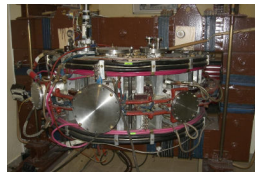
**SCIENCE**

**Tokamak CASTOR**  
@Institute of Plasma Physics, Prague  
1977-2007



**SCIENCE**  
& education

**Tokamak GOLEM**  
@Czech Technical University, Prague  
2007-



**EDUCATION**  
& science

... with the biggest  
control room  
in the world ..

**Tokamak Golem **\*\*REMOTE\*\*** for MASTER (Level 1)**  
The smallest & oldest operational tokamak with the biggest control rooms in the world

Home	Wiki	Control Room	Queue	Live	Results	GOLEM Diagram	Chamber status	IP cameras	3D model	Chat	Feedback	Stop
------	------	--------------	-------	------	---------	---------------	----------------	------------	----------	------	----------	------

**LEVEL 1**





Preionization (electron gun)  
Proton  
Toroidal magnetic field  
Current drive  
Vacuum island  
GAS handling  
Working Gas  
Discharge comment  
Place the discharge setup into the queue.



# Table of Contents

- 1 Introduction
- 2 The Tokamak (GOLEM)
- 3 The Tokamak GOLEM (remote) operation
- 4 Conclusion
- 5 Appendix**

# References I

-  Wikipedia contributors. Golem — Wikipedia, the free encyclopedia. <https://en.wikipedia.org/w/index.php?title=Golem>, 2020. [Online; accessed 29-March-2020].
-  V. Svoboda, B. Huang, J. Mlynar, G.I. Pokol, J. Stockel, and G. Vondrasek. Multi-mode Remote Participation on the Golem Tokamak. *Fusion Engineering and Design*, 86(6-8):1310–1314, 2011.
-  Brotankova, J. *Study of high temperature plasma in tokamak-like experimental devices*. PhD thesis, 2009.
-  Tokamak GOLEM contributors. Tokamak GOLEM at the Czech Technical University in Prague. <http://golem.fjfi.cvut.cz>, 2007. [Online; accessed June 8, 2023].

## References II



J. Wesson. *Tokamaks*, volume 118 of *International Series of Monographs on Physics*. Oxford University Press Inc., New York, Third Edition, 2004.