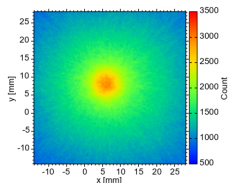
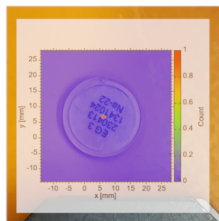
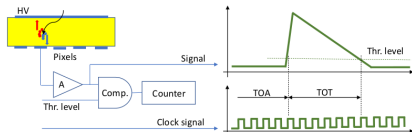


# Timepix3 detection module

- Compton camera has the ability to detect the direction of gamma rays produced by radioisotopes.
- The Compton camera was created from a Timepix3 detector with a sensor from Cadmium-Telluride with a thickness of 2 mm.
- Ongoing improvements of the camera resolution and location.



- Example with Na radioisotope radiation detection.

[S. Malec, 2023],[Malec et al., 2021]



Malec, S., Linhart, V., and Svoboda, V. (2021). Correlations in signals generated by runaway electrons in the golem tokamak measured using the timepix3 detection modules. In *2021 IEEE Nuclear Science Symposium and Medical Imaging Conference (NSS/MIC)*, volume XX, pages 1–6.



S. Malec (2023). Compton camera for detection of hard x-rays produced on the golem tokamak.