

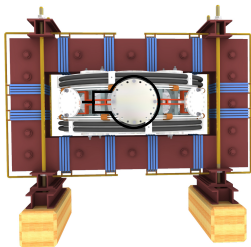
The GOLEM tokamak - setup

Vojtěch Svoboda

21. listopadu 2011

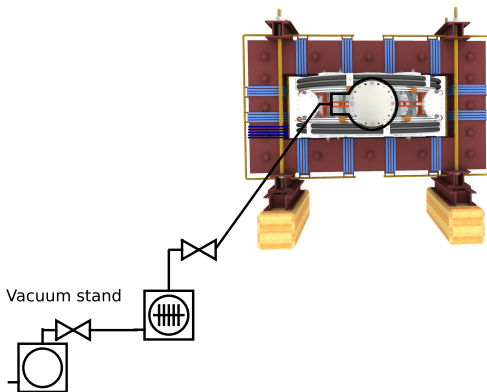
Tokamak GOLEM - basic

LEVEL 0



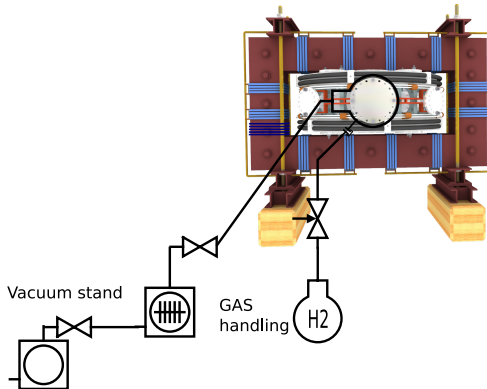
Tokamak GOLEM + vacuum pumping system (100 kPa → 1 mPa)

LEVEL 0



Tokamak GOLEM + working gas management (H₂ or He)

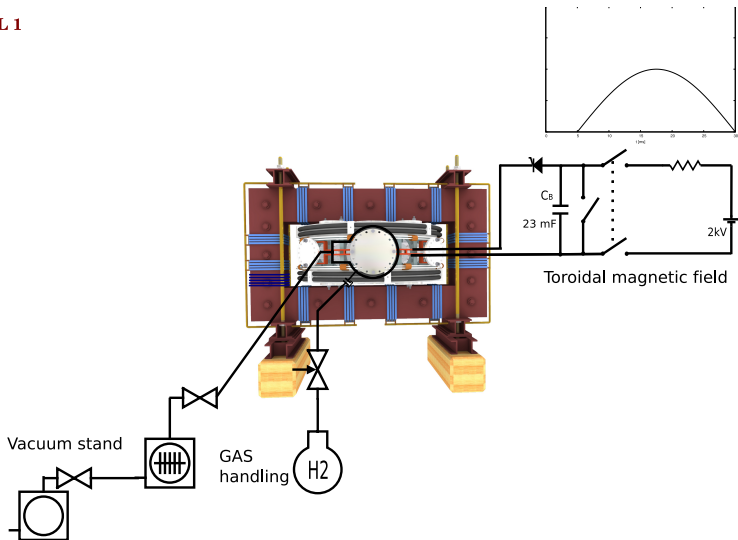
LEVEL 0



Tokamak GOLEM + B (toroidal magnetic field)

Plasma confinement

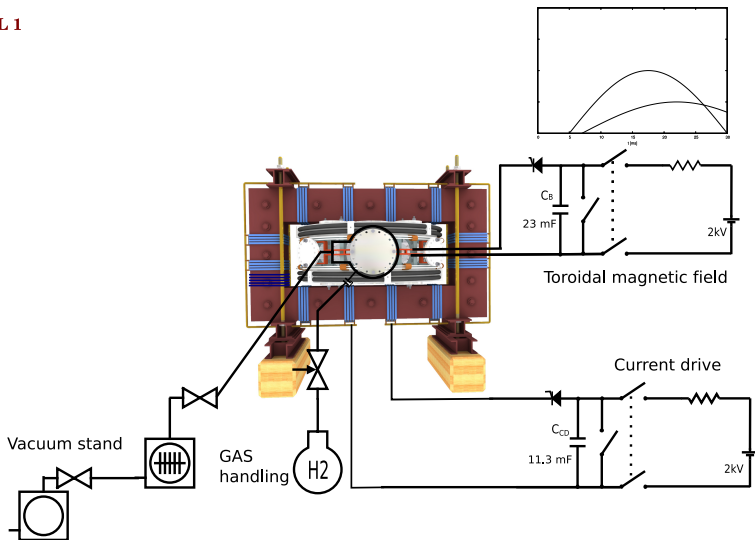
LEVEL 1



Tokamak GOLEM + CD (toroidal electric field)

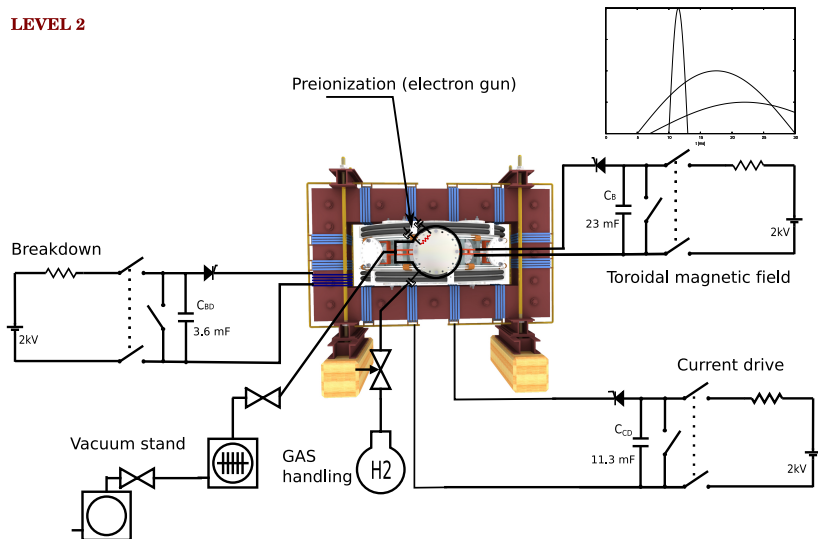
Plasma heating

LEVEL 1



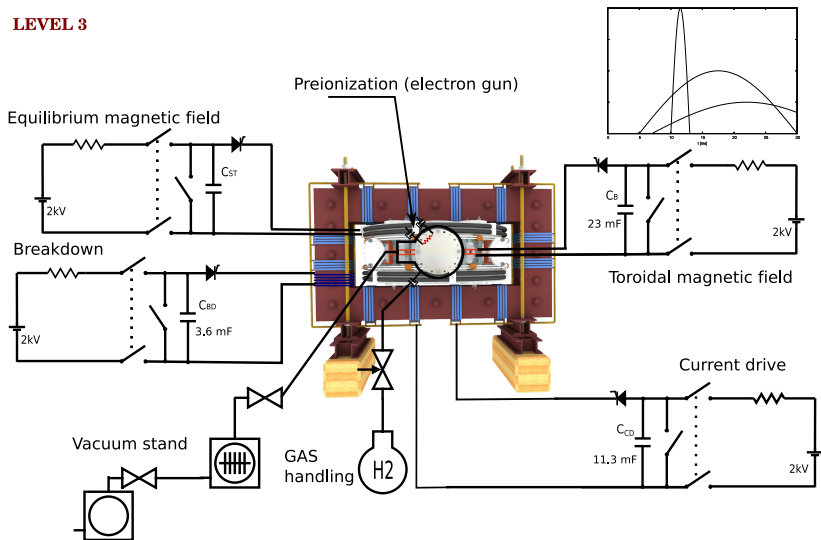
Tokamak GOLEM + breakdown the neutral gas plasma creation

LEVEL 2

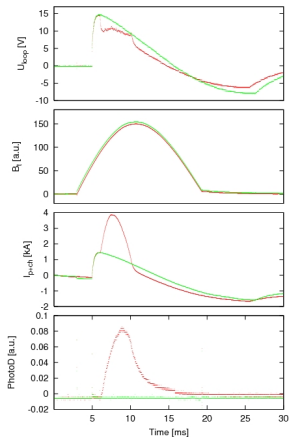
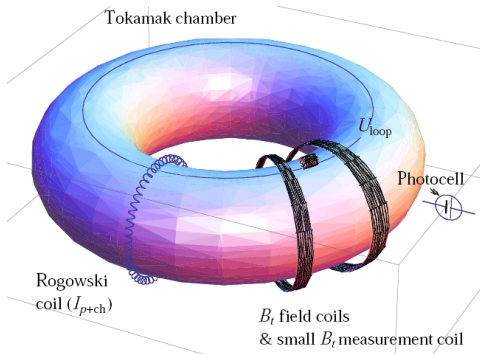


Tokamak GOLEM + plasma stabilization vertical magnetic field

LEVEL 3



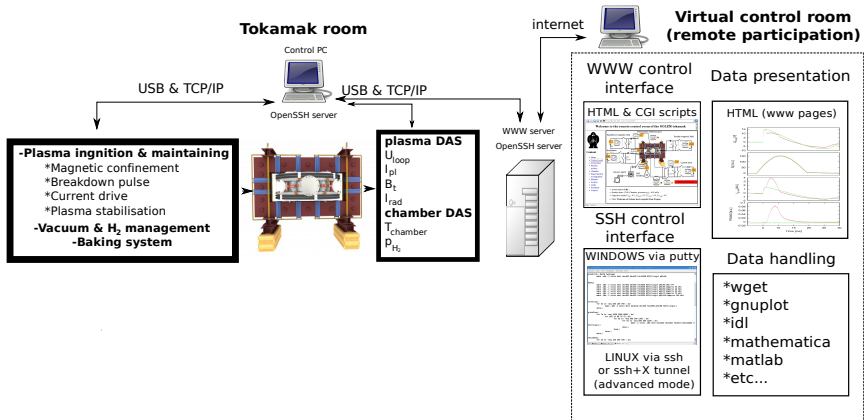
Basic plasma diagnostics in tokamak GOLEM



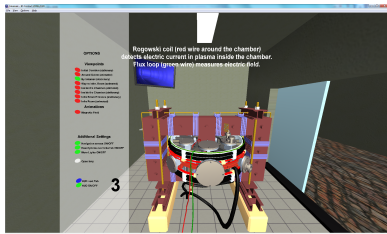
Data Acquisition System based on:



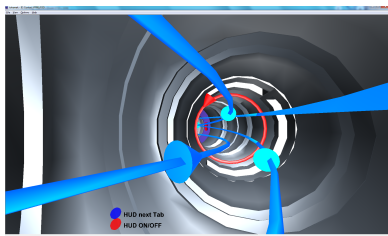
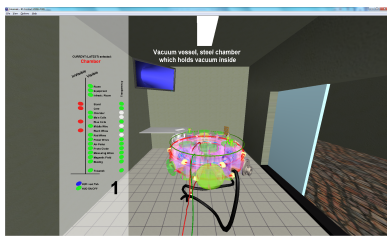
Unique remote operation capability



The GOLEM tokamak virtual model



Tokamak Room & Infrastructure Room



Inner view & Inside chamber

The GOLEM tokamak virtual Control Room

http://golem.fjfi.cvut.cz/CR/V1/events/PROMOTION/1011IBA2011/exp_L1.php

Tokamak Golem ****VIRTUALLY**** for IBA2011

Home

Control Room **L1** **L2** **L3**

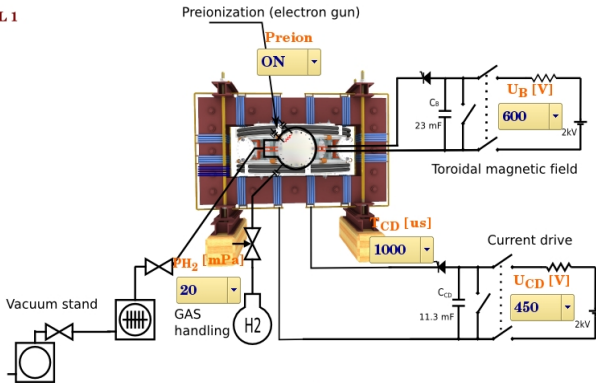
Queue

Live

Results

Manual **R**

LEVEL 1



Discharge comment

Place the discharge setup into the queue