

Remote operation web app - Control room

GOLEM remote

Introduction

Control room

Live

Results

Prague

Access: Level 1

Help

Introduction

Working gas

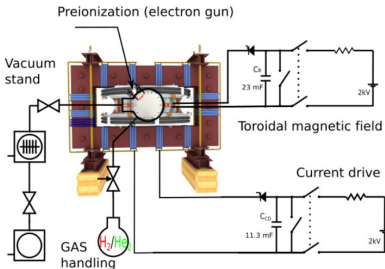
Preionization

Magnetic field

Current drive

Submit

This web interface will walk you through the process of configuring a discharge in the GOLEM tokamak. All settable values are perfectly safe. Proceed through each step by setting the desired values and then clicking the [Next](#) button. You can always go to a specific step by clicking its tab.



Next

3D model rendering method:

Static image (fast)

Interactive X3DOM (slower)

